



F e s t o o n S y s t e m

Cat.4n/45

1040 Series

w w w . v a s e l . c o m .

energy and data transfer systems



Vasel c- rail cable carrying and transfer systems works reproductively with energy and data transfer systems by using roundform and flatform cable (plating units, high capacity stowing systems, automotive-industrial manufacture workshops, automation integrated systems such as textile etc., stowing cranes in shipyards and ports; portal cranes, travelling cranes, special designed stowing and loading machines, milling and construction sector facility applications) hydraulic and pneumatic application systems that requires mobile control by long range of maintenance period.

- *It is also used mobile machine applications that provide fiber-optic cable communication except power and control applications.*
- *It is designed to provide assembly facility during installation and technical maintenance.*
- *Provides high performance in challenging conditions*
- *Provides saving from time and labor focused on economic and safe working*
- *It is manufactured within appropriate sizes and appropriate material for application standards applied in most countries of the world.*
- *It is manufactured from corrosion resistance materials against dust, moist, frosting, high temperature working conditions.*
- *With special extra standard product manufacturing for specific applications, it provides practical solutions to the sector*



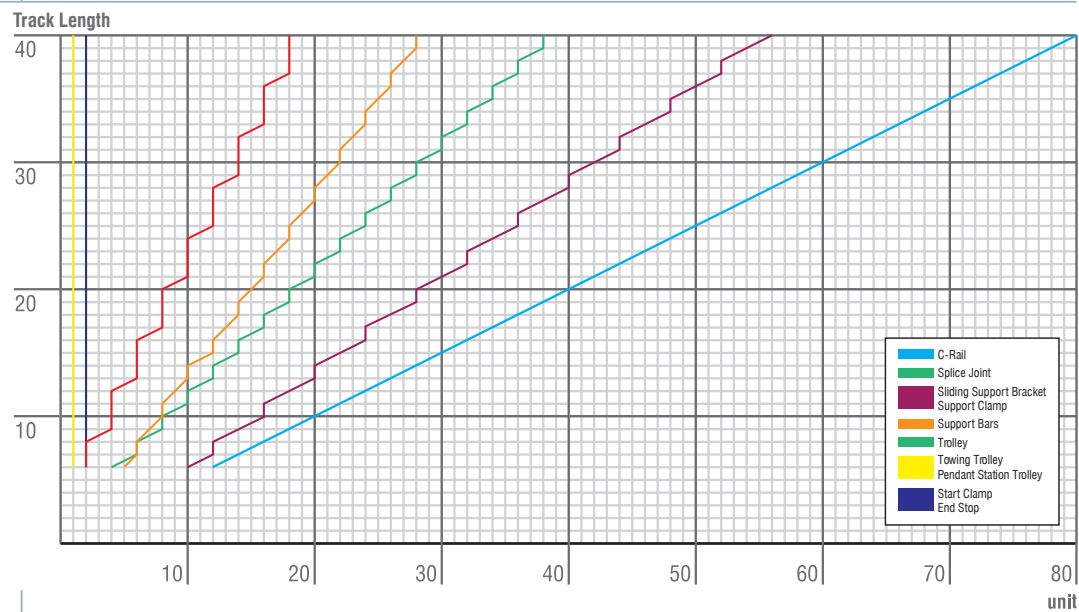
! Please contact with our technical team for applications that will be used in extra standard challenging and hard working conditions. we will be pleased to help to you.

General System Application Product Unit Chart	4
General view for Power -Control-Runway Applications	5
Questionnaire Form for Order	6-7
Platform Cable Festoon System Application for Double Girder Crane	8
Platform Cable Festoon System Application for Monorail Crane	9
Roundform Cable Festoon System Application for Double Girder Crane	10
Roundform Cable Festoon System Application for Monorail Crane	11
1040 Series Festoon System	
1040 Series C-Rail	12
1040 Series Splice Joint	12
1040 Series Plastic Splice Joint	12
1040 Series Support Bracket (with two connection bolt)	12
1040 Series Sliding Support Brackets	12
Mounting Parts for 1040 series Festoon system (1012 series)	13-16
Application Examples with Support Attacments and Support Arms	17
PVC Conductor Rail Hanger Sets	18
Tow Arm Sets	19-20
Application Example for Support Bar Arrangement	21-22
Application Example for Towing Arrangement	23-24
Towing Arm	25
1040 Series End Stops	25
1040 Series FLATFORM CABLE APP. PRODUCTS(Trolley Station Trolleys, Start Clamps)	
1040 Series Steel Trolley with Plastic saddle for Flatform Cables	26
1040 Series Steel Trolley for Flatform Cables	26-28
1040 Series Towing Trolley with Plastic saddle for Flatform Cables	29
1040 Series Towing Trolleys for Flatform Cables	29-30
1040 Series Pendant Station Trolley with plastic saddle for Flatform Cables	31
Cable Gland for Flatform Cable	31
Plug and Socket Sets	31
1040 Series Pendant Station Trolley for Flatform Cables	32
1040 Series Start Clamps	33
1040 Series ROUNDFORM CABLE APP. PRODUCTS(Trolleys,Tow Trolleys,Pendant Station Trolleys, Start Clamps)	
1040 Series Steel Trolley (ball joint)	34
1040 Series Steel Trolley (U-bolt)	34
1040 Series Tow Trolley (ball joint)	36
1040 Series Towing Trolley (U-bolt)	36
1040 Series Pendant Station Trolley (ball joint)	37
1040 Series Pendant Station Trolley (U-bolt)	37

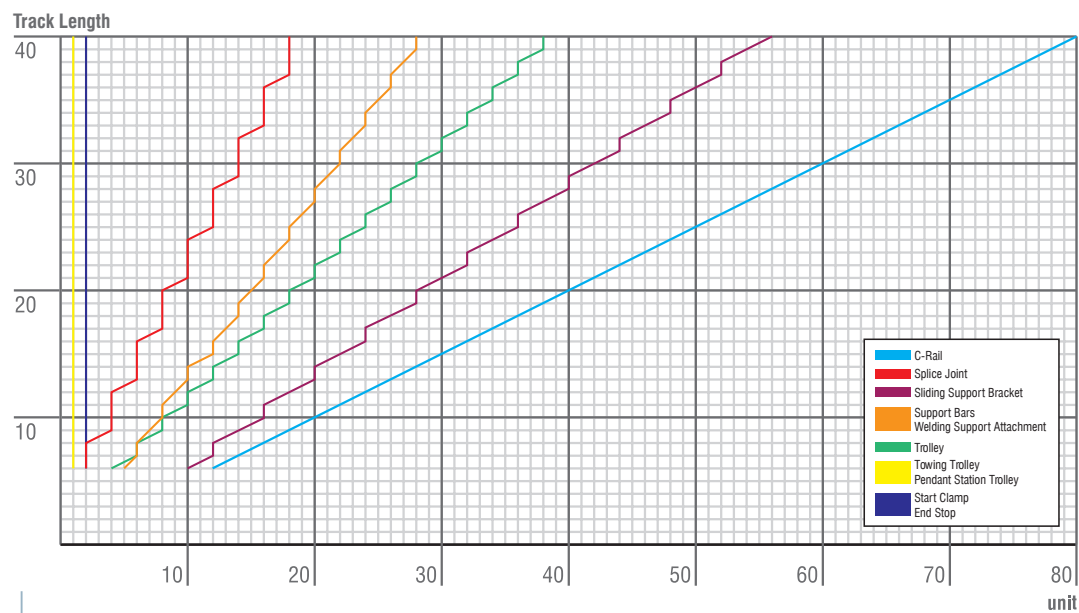
1040 Series Start Clamp (ball joint)	38
1040 Series Start Clamp (U-bolt)	38
Support Saddles (1014 Series)	39
Support Saddles (u-bolt) (1014 Series)	40
1040 Series Suspension Trolleys	41
Tow Ropes, Hooks, Rope Eyes	42
End Carriage Cap	43
Rubber Buffers	43

General System Application Product Unit Chart

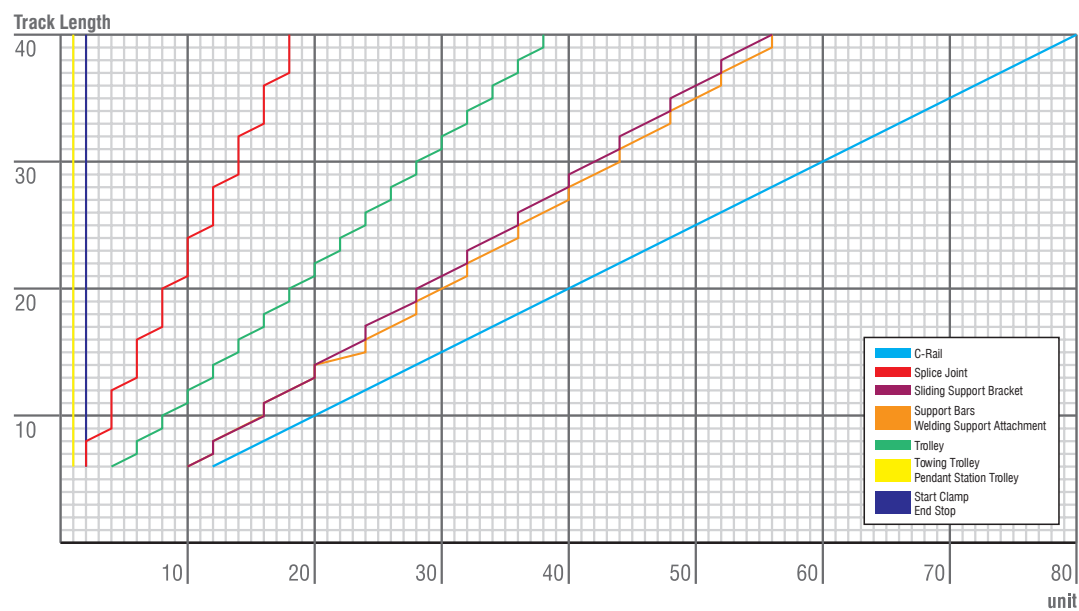
Monorail Application



Double Girder Application (One Side Systems Arrangement)



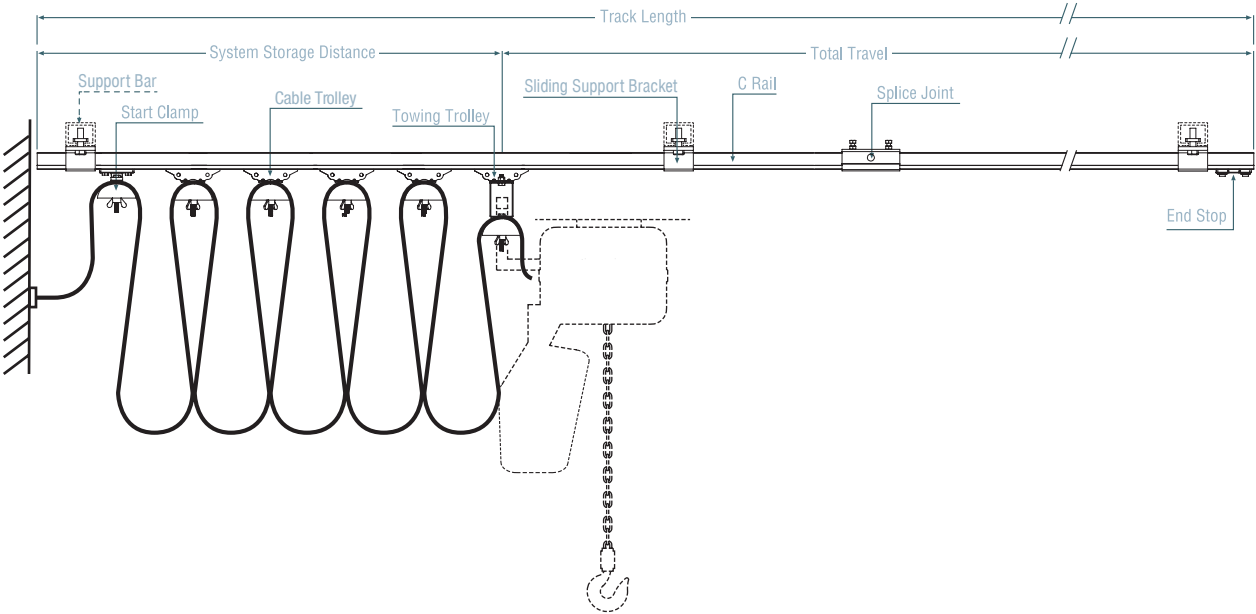
Double Girder Application (Two Side Systems Arrangement)



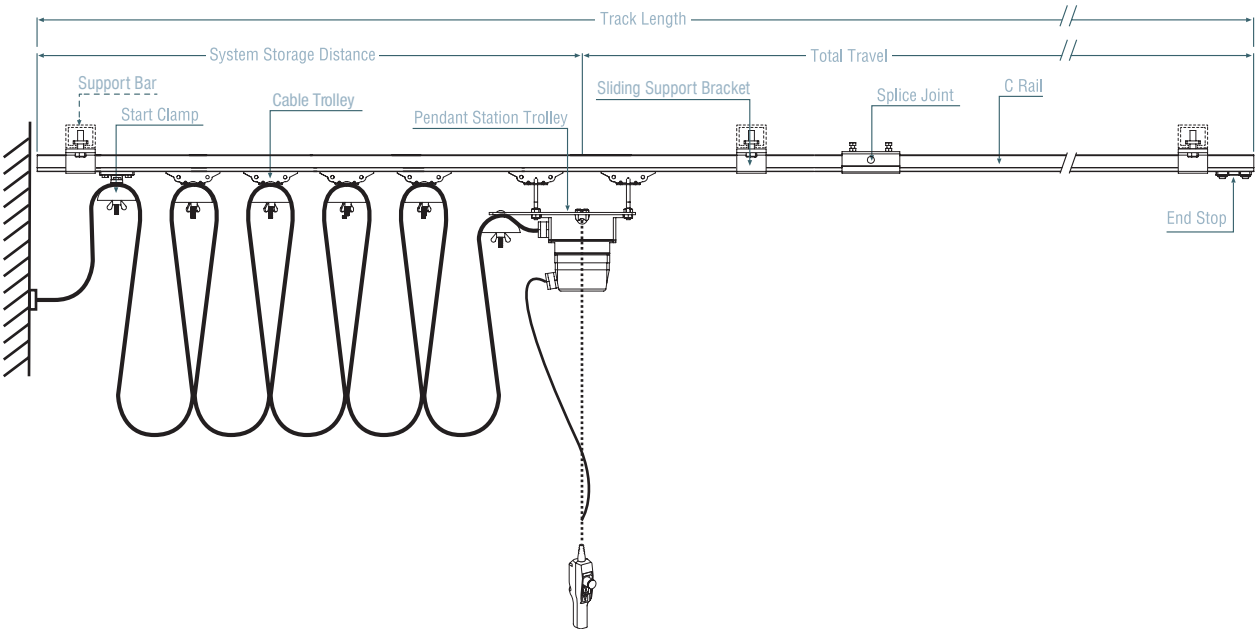
NOTE: The constant numbers in this chart are used in general system applications. Please contact with our company about the in-system numbers of c-rail and equipments which will be used in different system and working conditions.

If you would prefer our sales engineers to carry out the appropriate festoon selection for you and at the same time prepare a quotation for your consideration, please directly contact us +90 332 235 35 10 phone number or e-mail:sales@vasel.com.tr

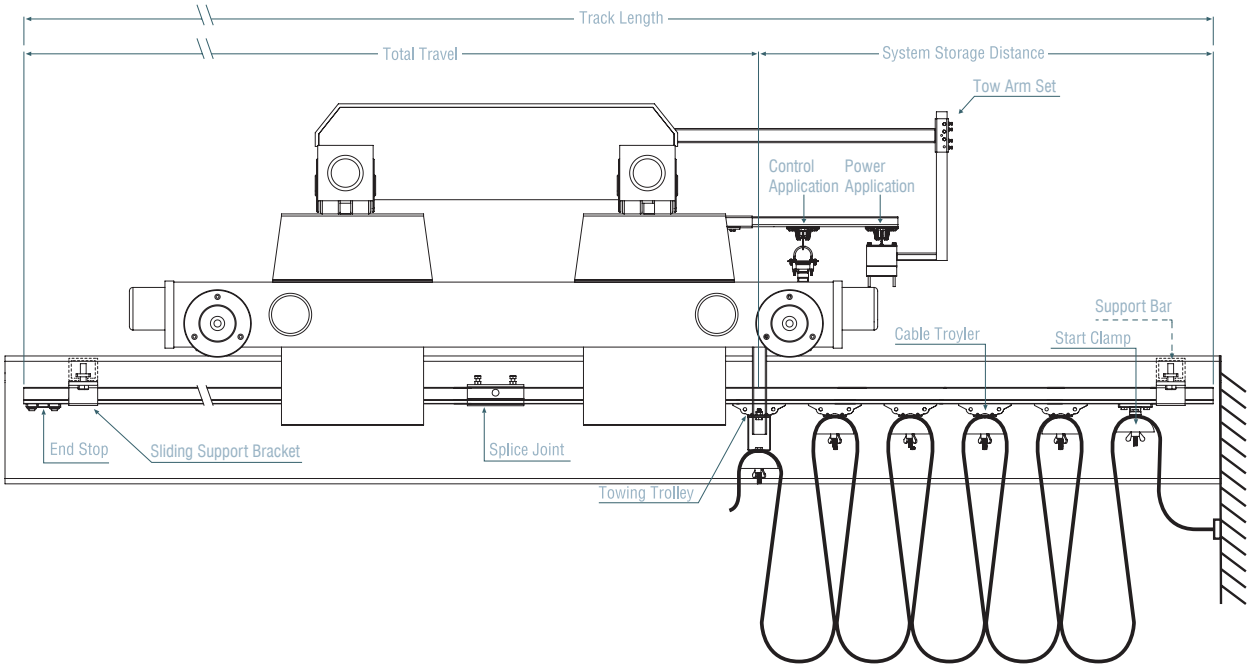
Power Application (Typical using flatform cable)



Control Application (Typical using flatform cable)



Runway Application (Typical using flatform cable)



Company Information

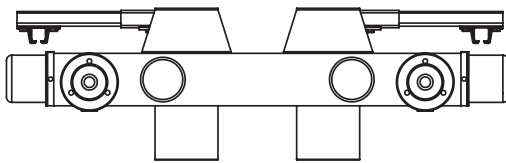
Date	Contact Person	E-Mail
Company Name	Department	Web
Address	Phone	<i>Please answer all the following questions as accurately as possible. This information will form the basis of our quotation to you.</i>
.....	Fax	

System Information

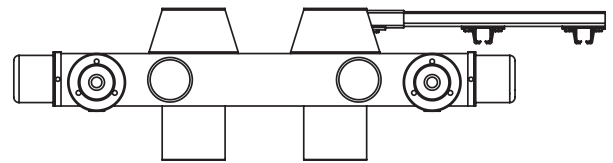
Type Of Application	<input type="checkbox"/> Outdoor <input type="checkbox"/> Indoor	Temperature Range	°C min	°C max	Daily working hours	day/hour
---------------------	--	-------------------------	--------------	--------------	---------------------------	----------

Mounting Part Arrangement Types With Support Bar (see page 21-22)

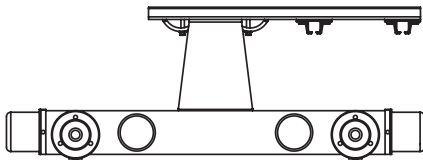
- ☐ **Double Girder**
(two side Support bar arrangement)



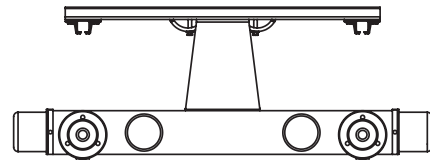
- ☐ **Double Girder**
(one side Support bar arrangement)



- ☐ **Monarail**
(one side Support bar arrangement)



- ☐ **Monarail**
(two side Support bar arrangement)



Power Application (see page 5)

- ☐ **Tow Arm Arrangement**
(see page 19/ 23)

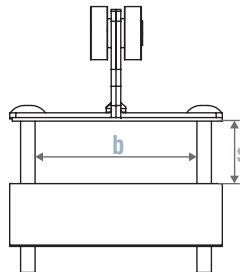
L1 mm
L2 mm
L3 mm

System storage distance m
Track Length m
Max loop depth cm
Travel Speed m/min
Min Bending Radius mm

- ☐ **Flatform Cables** (see page 26-33)

Cab. No	Width	Thickness
.....	mm	mm
.....	mm	mm
.....	mm	mm

s mm
b mm

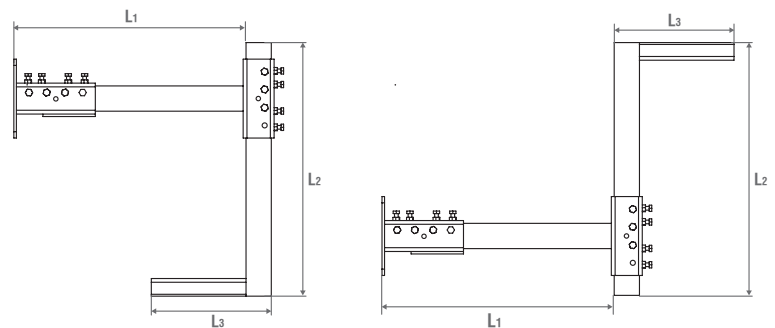


- ☐ **Roundform Cables** (see page 34-40)

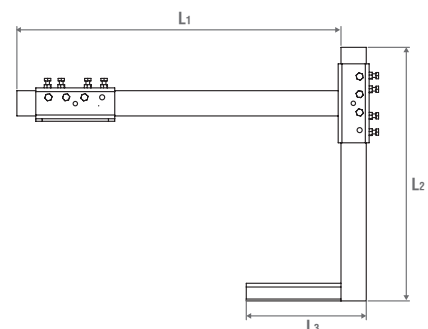
Cab. No	Cable Dim. ØD
.....	mm
.....	mm
.....	mm



- ☐ **VS1008BS1** (see page 19)



- ☐ **VS1008AS1** (see page 19)

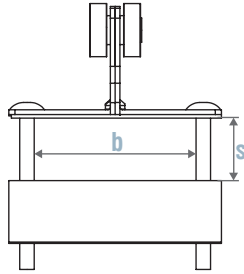


Control Application (see page 5)

☐ Flatform Cables (see page 26-33)

Cab. No	Width	Thickness
.....	mm	mm
.....	mm	mm
.....	mm	mm

s mm
b mm



☐ Roundform Cables (see page 34-40)

Cab. No	Cable Dim. ØD
.....	mm
.....	mm
.....	mm



Runway Girder Application (see page 5)

☐ Tow Arm Arrangement (see page 19-20 / 24)

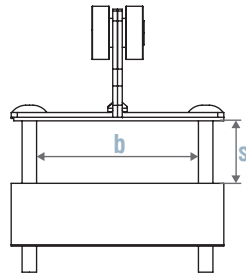
System storage distance m
Track Length m
Max loop depth cm
Travel Speed m/min
Min Bending Radius mm

L1 mm
L2 mm
L3 mm

☐ Flatform Cables (see page 26-33)

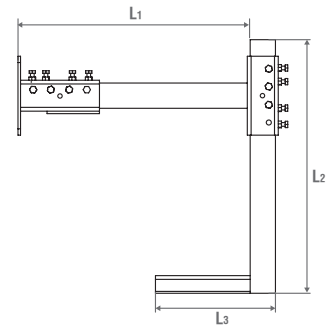
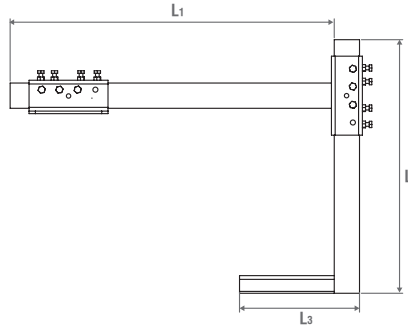
Cab. No	Width	Thickness
.....	mm	mm
.....	mm	mm
.....	mm	mm

s mm
b mm



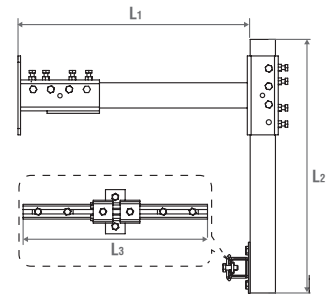
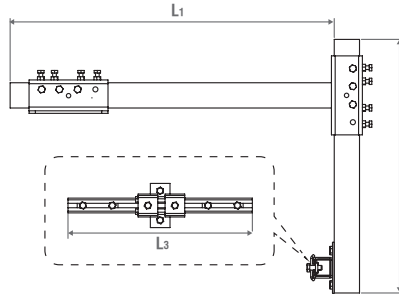
☐ VS1008AS1 (see page 19)

☐ VS1008BS1 (see page 19)



☐ VS1008AS2 (see page 20)

☐ VS1008AS2 (see page 20)



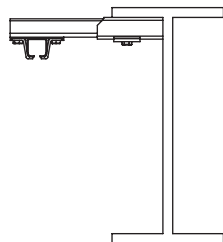
☐ Roundform Cables (see page 34-40)

Cab. No	Cable Dim. ØD
.....	mm
.....	mm
.....	mm

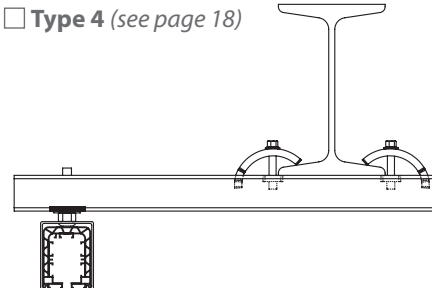


Support Bracket Arrangement

☐ Type 1



☐ Type 4 (see page 18)



☐ End Carriage Cap (see page 8-11,43)

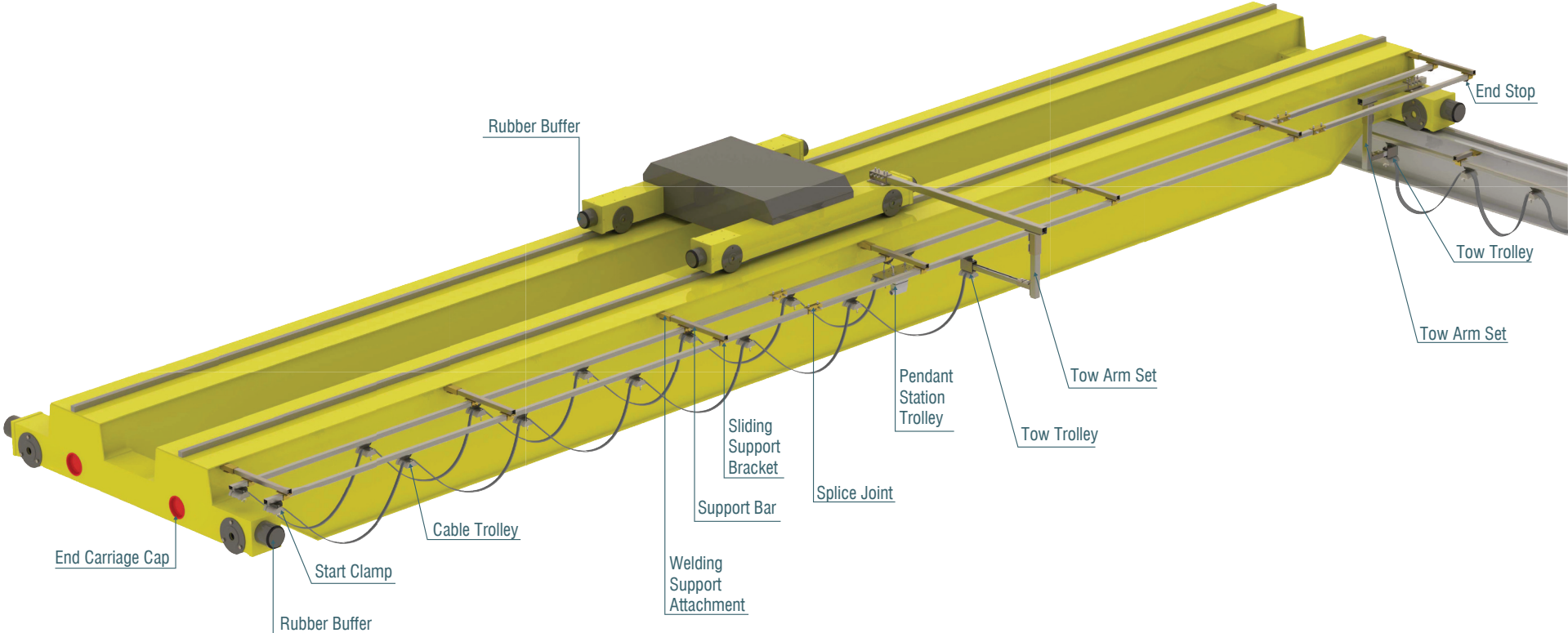
☐ Rubber Buffer (see page 8-11,43)

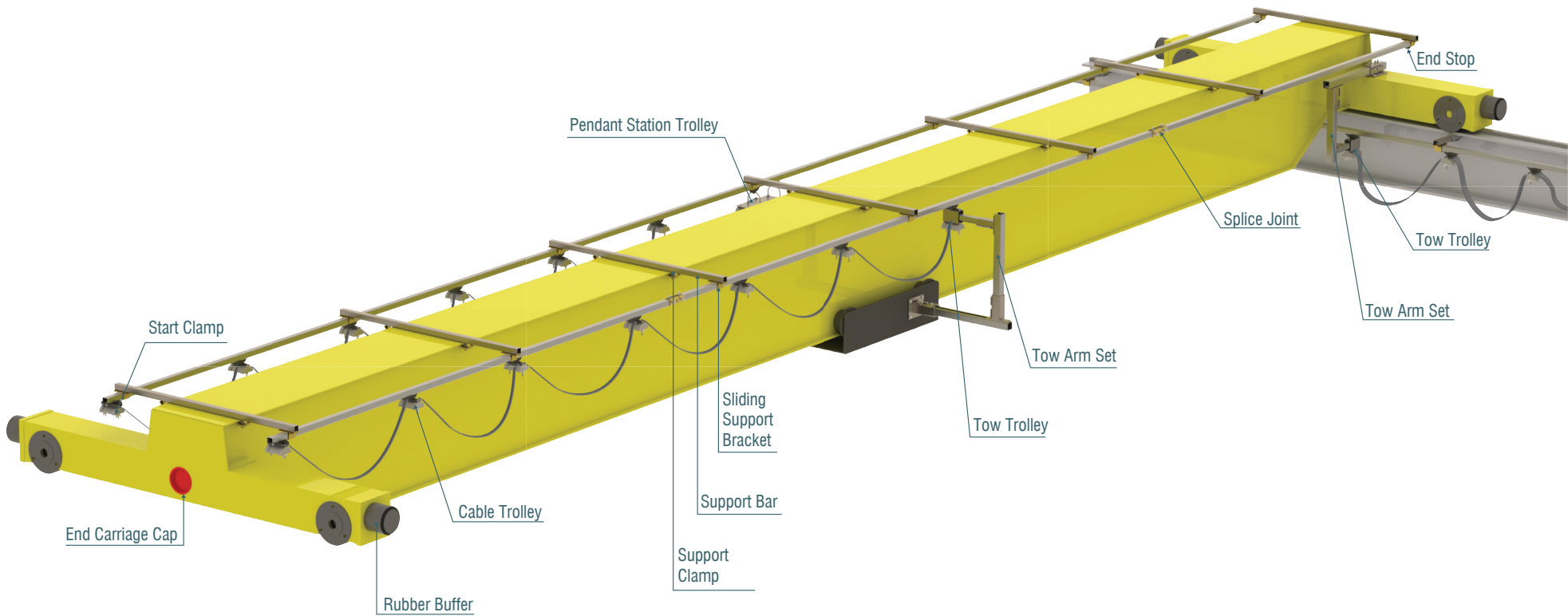
Product Code:...../.....unit (for main trolley arrangement)

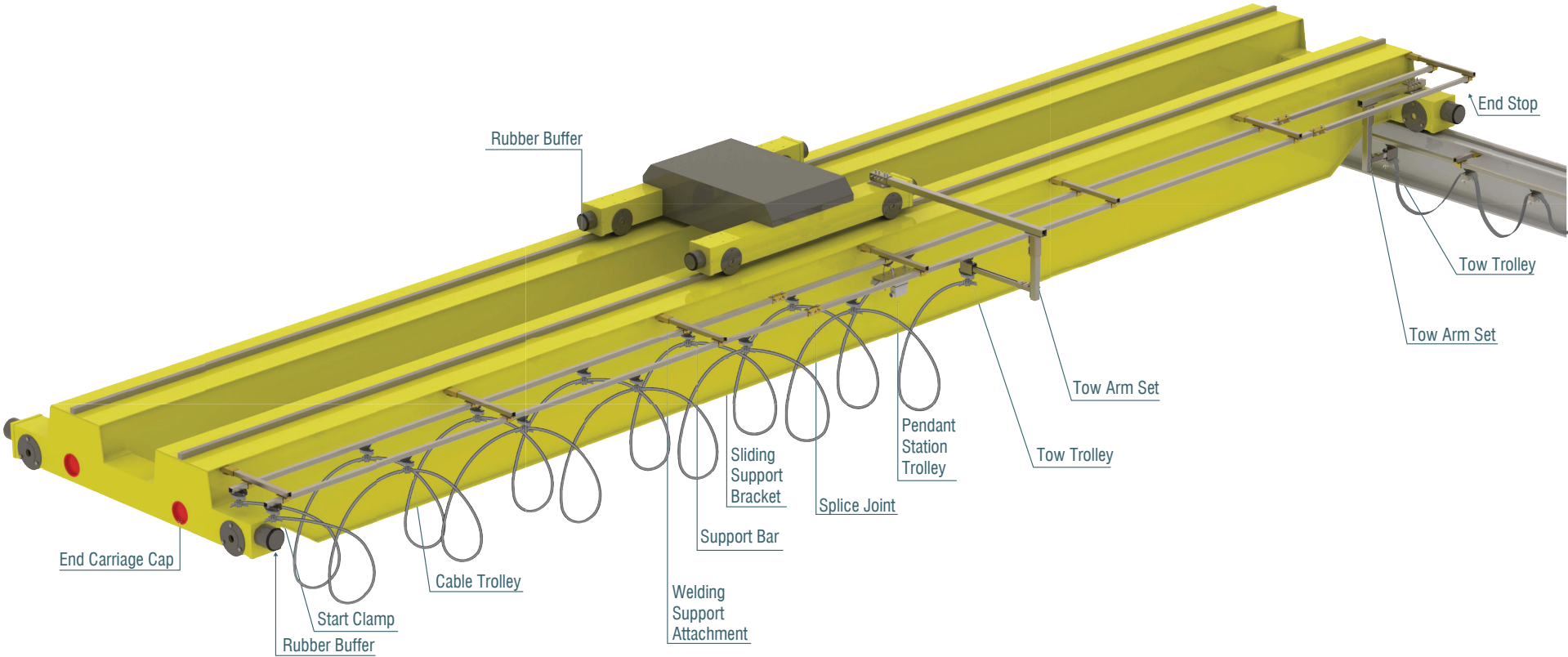
Product Code:...../.....unit (for runway girder arrangement)

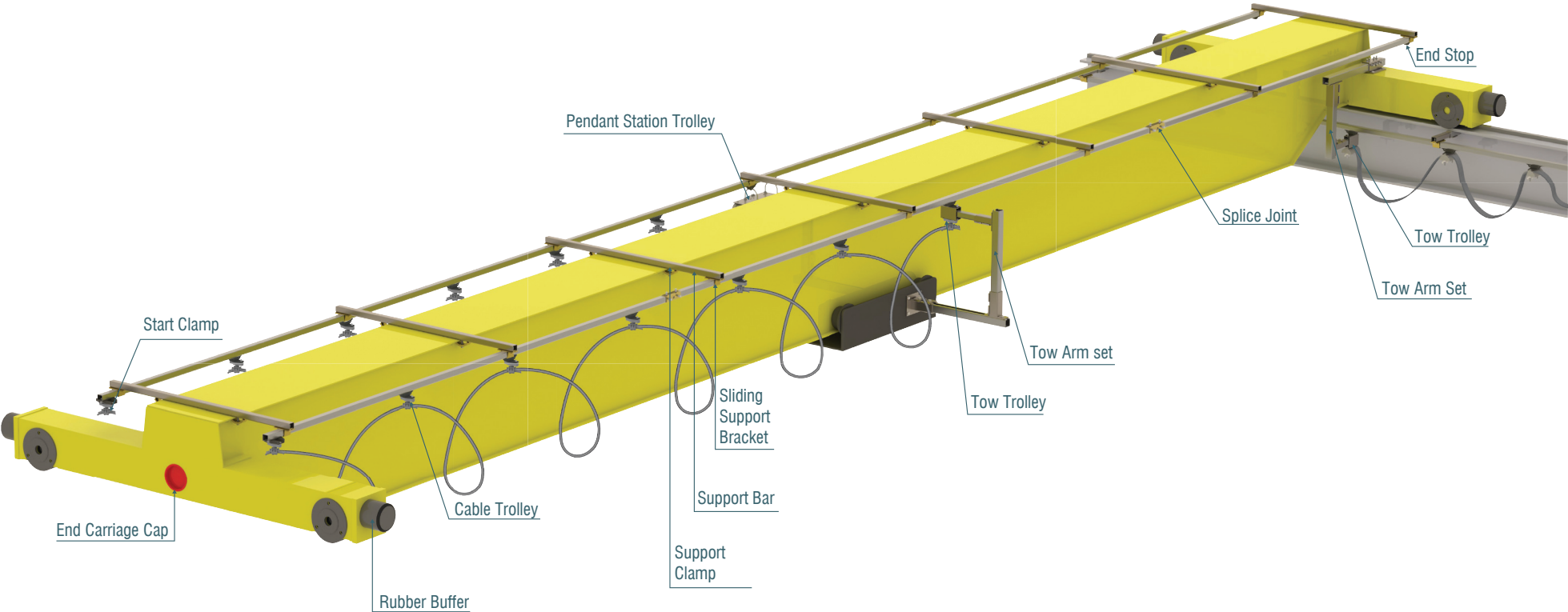
Special operating conditions :

Any additional data:





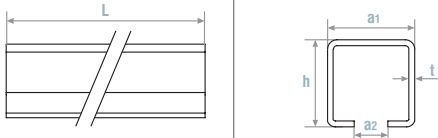




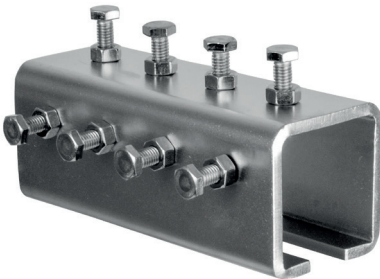
C-Rail
VS1040R6



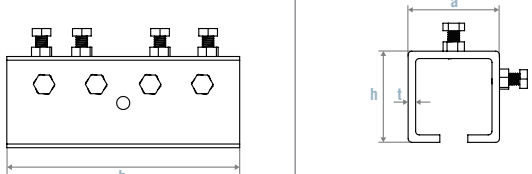
Product Code	Material	Weight (kg/m)	Dimensions (mm)			
			a ₁	a ₂	h	t
VS1040R6	Steel (galvanised)	2,60	40	14	40	2,5



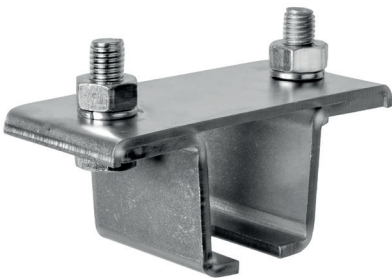
Splice Joint
VS1040E2



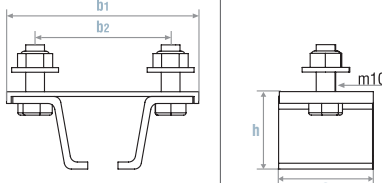
Product Code	Material	Weight (kg)	Dimensions (mm)			
			a	b	h	t
VS1040E2	Steel (galvanised)	0,66	49	125	49	4



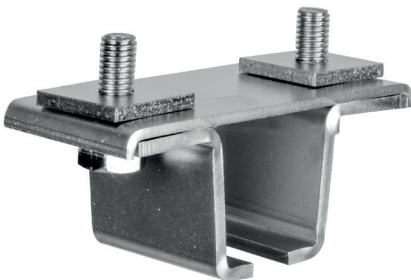
Support Bracket (with two connection bolt) (suitable for existing steel structure)
VS1040D6



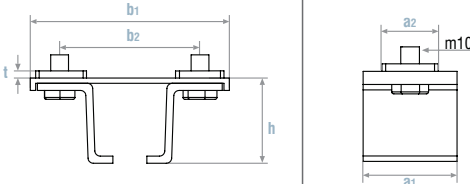
Product Code	Material	Weight (kg)	Dimensions (mm)			
			a	b ₁	b ₂	h
VS1040D6	Steel (Galvanised)	0,44	50	111	75	47



Sliding Support Bracket (suitable for 1012 series)
VS1040D4



Product Code	Material	Weight (kg)	Dimensions (mm)					
			a ₁	a ₂	b ₁	b ₂	h	t
VS1040D4	Steel (Galvanised)	0,46	50	30	111	75	47	4

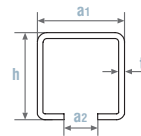
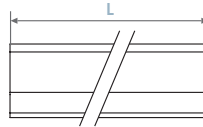


*See application examples for girder arrangement on page 21-22

Support Bars (1012 series) VS1012B/....



Product Code	Material	Weight (kg/m)	Dimensions (mm)			
			a ₁	a ₂	h	t
VS1012B/....	Steel (galvanised)	2,60	40	14	40	2,5



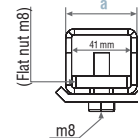
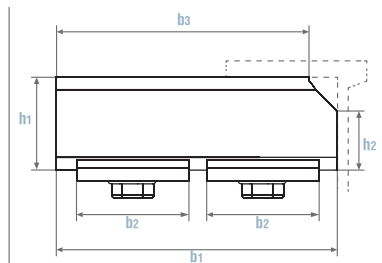
*See application examples for girder arrangement on page 21-22

*This product is between different sizes (300mm - 2000 mm) can be produced. Please contact our company with system requirements

Welding Support Attachment (1012 series) VS1012K



Product Code	Material	Weight (kg)	Dimensions (mm)					
			a	b ₁	b ₂	b ₃	h ₁	h ₂
VS1012K	Steel	0,70	51	120	40	107	51	36

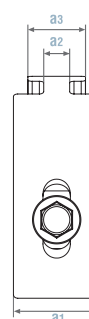
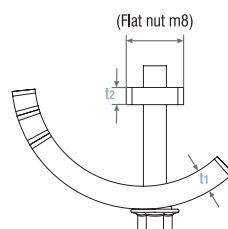


*See application examples for girder arrangement on page 21-22

Support Clamp (1012 series) VS1012C2

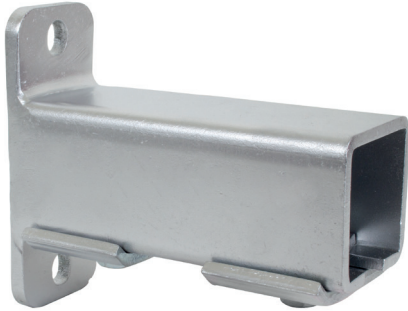


Product Code	Material	Weight (kg)	Dimensions (mm)				
			a ₁	a ₂	a ₃	t ₁	t ₂
VS1012C2	Steel (galvanised)	0,19	30	10	25	8	4



*See application examples for girder arrangement on page 21-22

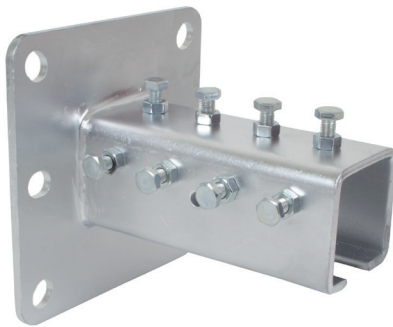
Support Attachment (2 hole) for Body Mounting (1012 series) VS1012U2



Product Code	Material	Weight (kg/m)	Dimensions (mm)						
			a ₁	a ₂	b	c ₁	c ₂	t	
VS1012U2	Steel (galvanised)	1,10	110	87	45	125	40	6	

*See application examples for body mounting arrangement on page 17

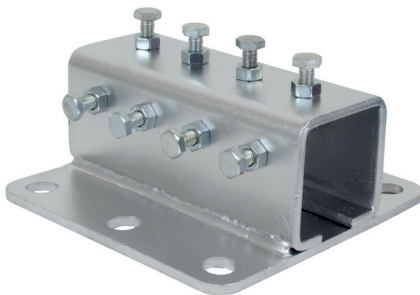
Support Attachment (6 hole) for Vertical Body Mounting (with fixing bolt)(1012 series) VS1012U6VB



Product Code	Material	Weight (kg/m)	Dimensions (mm)							
			a ₁	a ₂	a ₃	b ₁	b ₂	c ₁	t	
VS1012U6VB	Steel (galvanised)	1,14	125	99	49,5	125	99	125	4	

*See application examples for towing arrangement on page 19-20

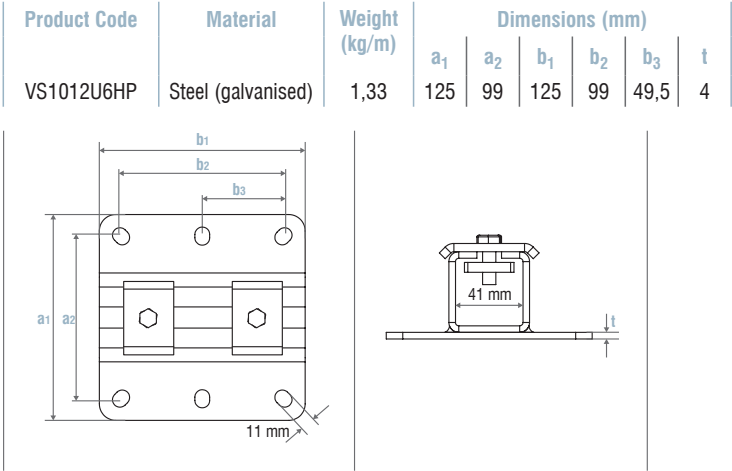
Support Attachment (6 hole) for Horizontal Body Mounting (with fixing bolt)(1012 series) VS1012U6HB



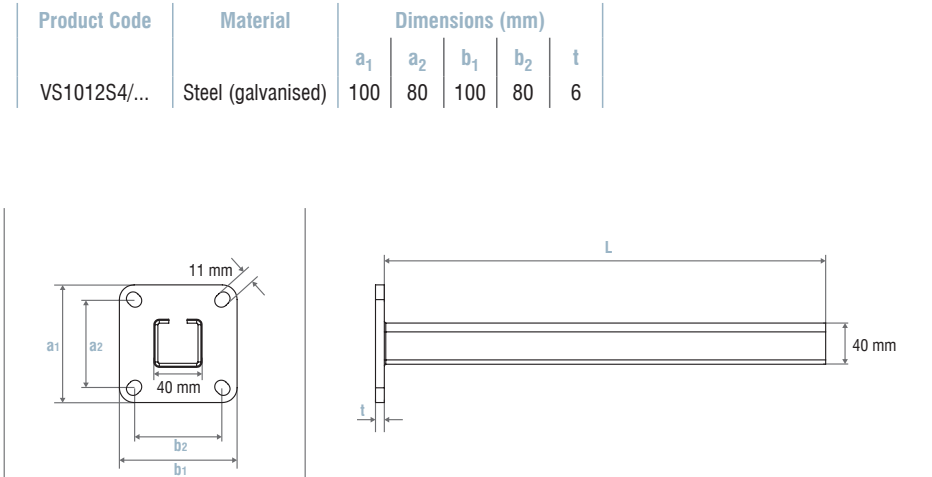
Product Code	Material	Weight (kg/m)	Dimensions (mm)						
			a ₁	a ₂	b ₁	b ₂	b ₃	t	
VS1012U6HB	Steel (galvanised)	1,16	125	99	125	99	49,5	4	

*See application examples for towing arrangement on page 19-20

■ **Support Attachment (6 hole) for Horizontal Body Mounting (with fixing plate)(1012 series)**
VS1012U6HP



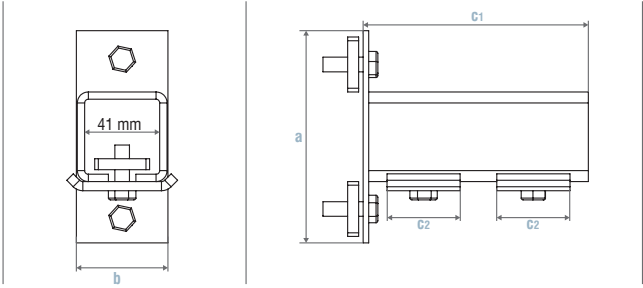
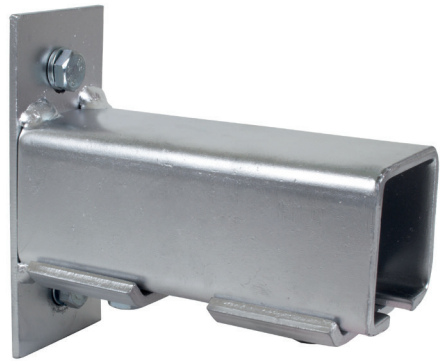
■ **Support Arm for Body Mounting (1012 series)**
VS1012S4/...



*See application examples for body mounting arrangement on page 17

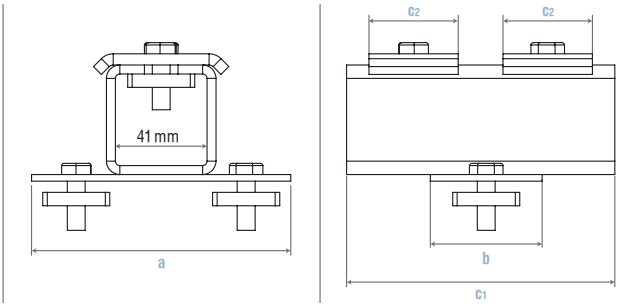
■ **Support Attachment for Support Bar Mounting (1012 series) (2HVP)**
VS1012Y2VP

Product Code	Material	Weight (kg/m)	Dimensions (mm)			
			a	b	c ₁	c ₂
VS1012Y2VP	Steel (galvanised)	1,07	116	50	128	40

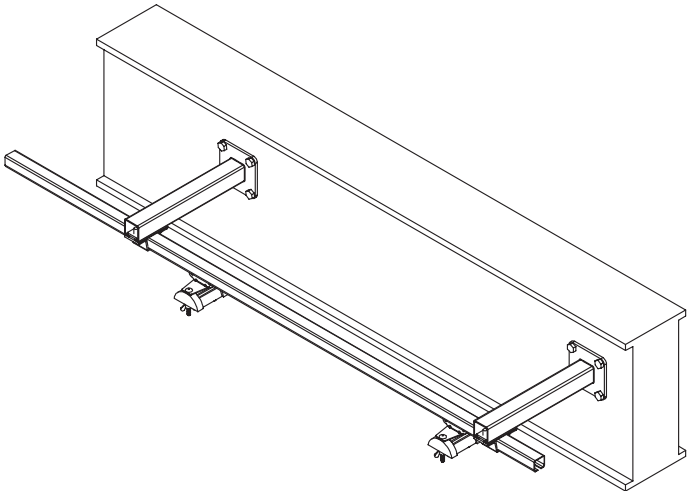
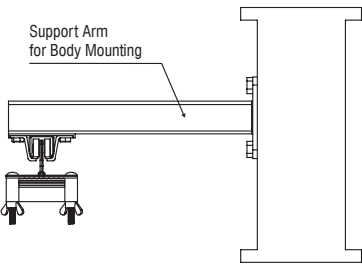
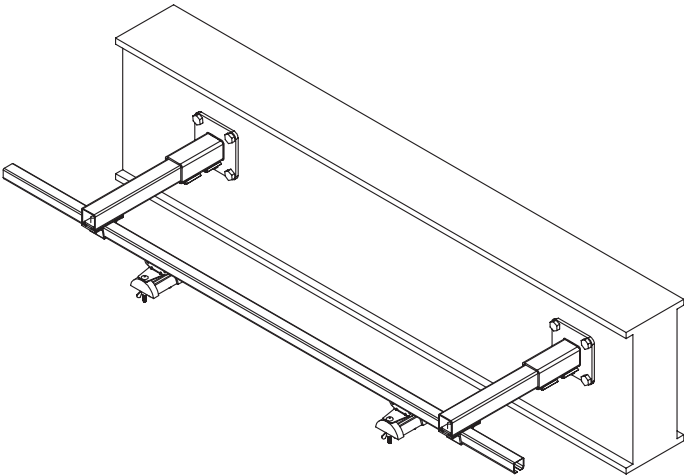
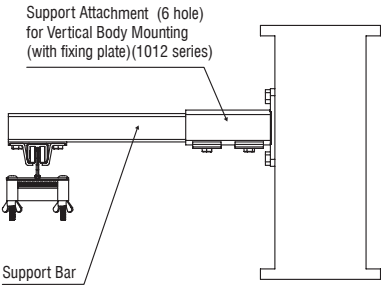
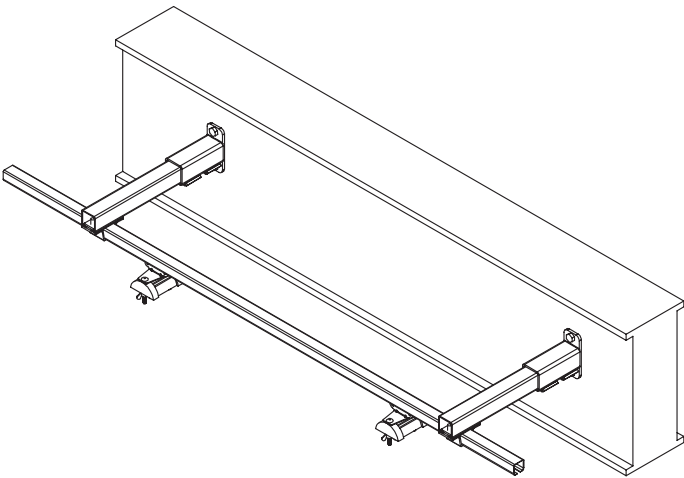
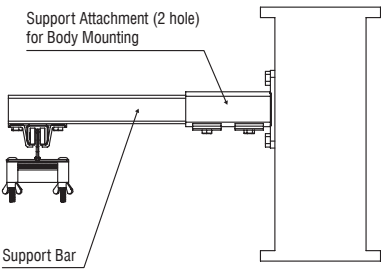


■ **Support Attachment for Support Bar Mounting (1012 series) (2HHP)**
VS1012Y2HP

Product Code	Material	Weight (kg/m)	Dimensions (mm)			
			a	b	c ₁	c ₂
VS1012Y2HP	Steel (galvanised)	1,07	116	50	125	40



Mounting Examples with Support Attachments and Support Arms



■ **Support Bar (with one connection hole)**
VS1010D/..... VS1012D/.....



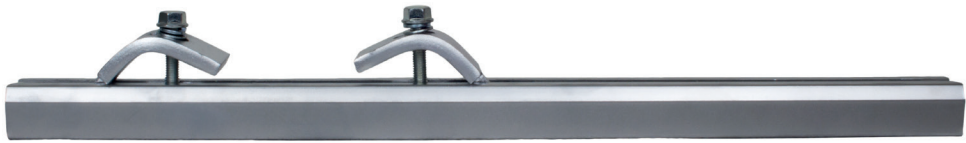
Product Code	Material	Weight (kg/m)	Dimensions (mm)			
			a ₁	a ₂	h	t
VS1010D/.....	Steel (galvanised)	1,08	30	9	28	1,5
VS1012D/.....	Steel (galvanised)	2,60	40	14	40	2,5

■ **Support Bar (with two connection holes)**
VS1010G/..... VS1012G/.....



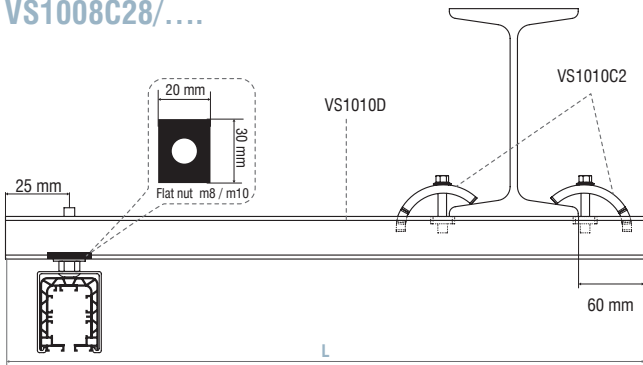
Product Code	Material	Weight (kg/m)	Dimensions (mm)			
			a ₁	a ₂	h	t
VS1010G/.....	Steel (galvanised)	1,08	30	9	28	1,5
VS1012G/.....	Steel (galvanised)	2,60	40	14	40	2,5

■ **Enclosed Conductor Rail Hanger Sets**
VS1008C28/.... VS1008C40/....

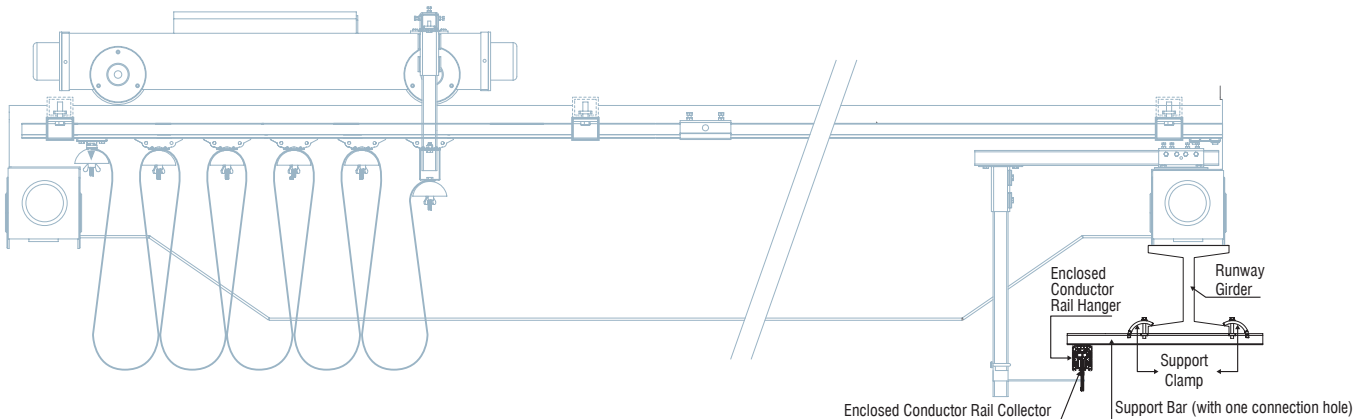
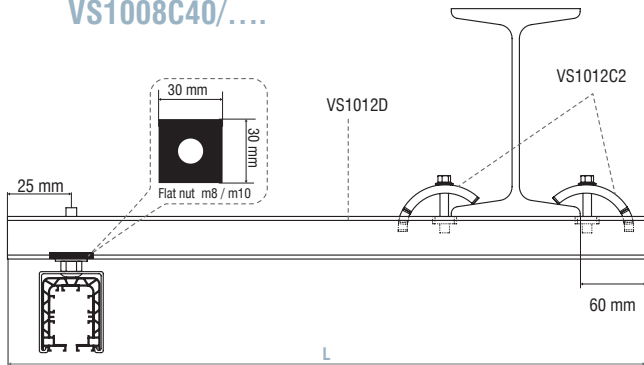


Product Code	Material
VS1008C28/....	Steel (galvanised)
VS1008C40/....	Steel (galvanised)

VS1008C28/....

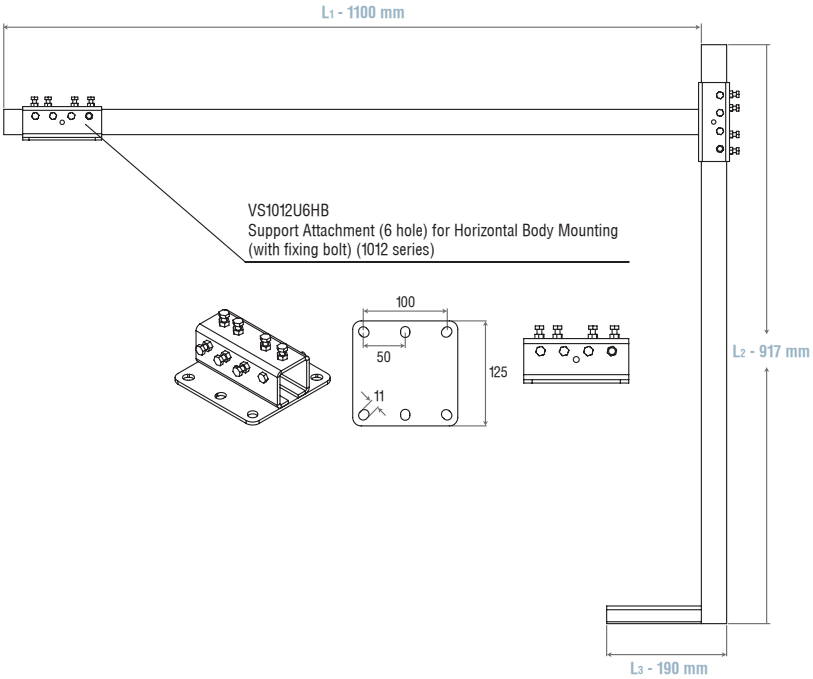


VS1008C40/....



Towing Arm Sets (for towing trolley)
VS1008AS1

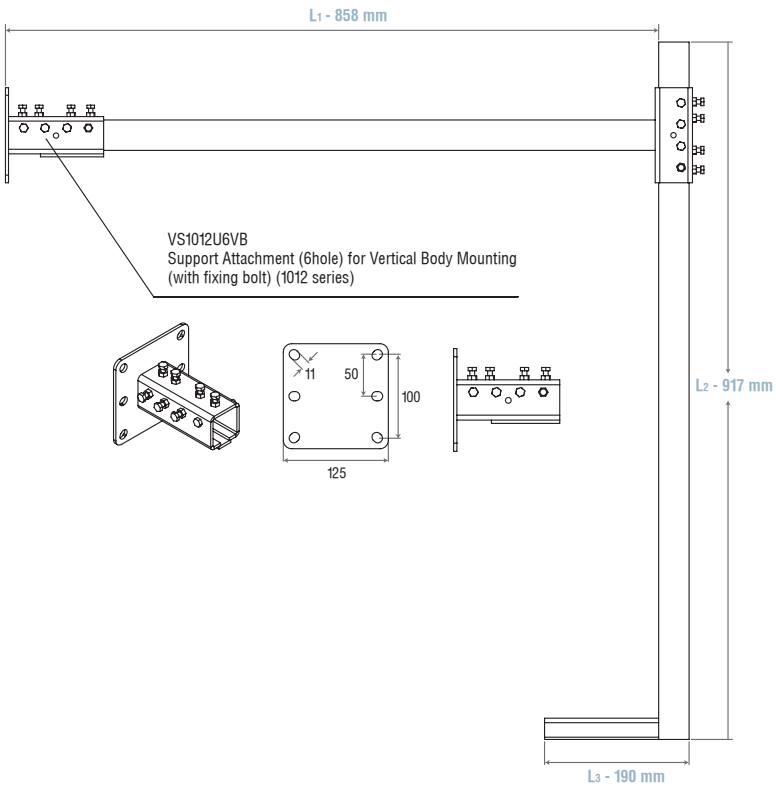
Product Code	Material
VS1008AS1	Steel (galvanised)



**See application examples for towing arrangement on page 23-24*

Towing Arm Sets (for towing trolley)
VS1008BS1

Product Code	Material
VS1008BS1	Steel (galvanised)

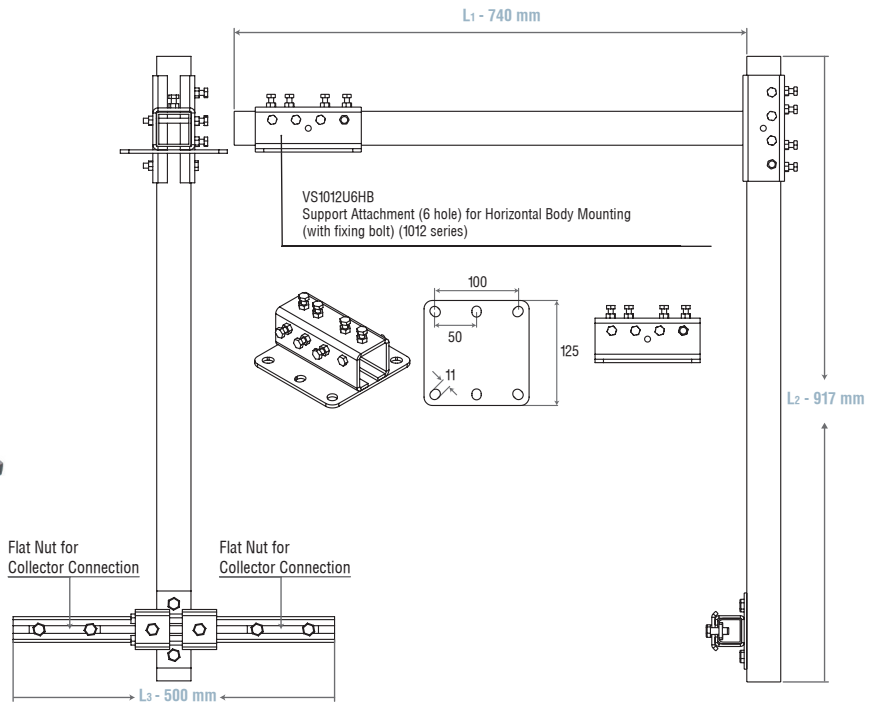


**See application examples for towing arrangement on page 23-24*

Towing Arm Sets (for enclosed conductor rail collector)
VS1008AS2



Product Code	Material
VS1008AS2	Steel (galvanised)

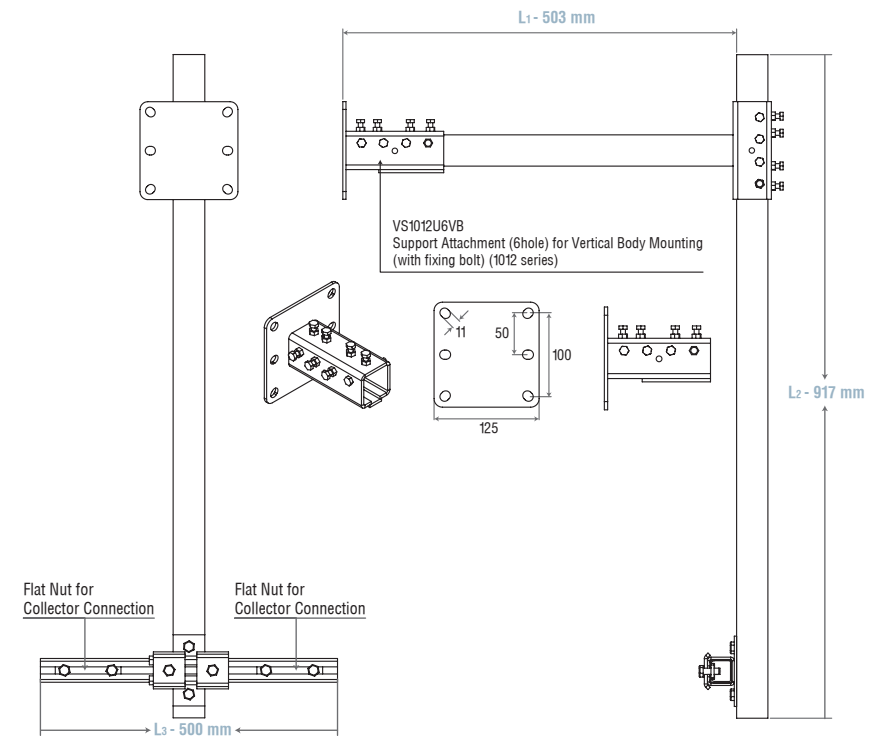


**See application examples for towing arrangement on page 24*

Towing Arm Sets (for enclosed conductor rail collector)
VS1008BS2

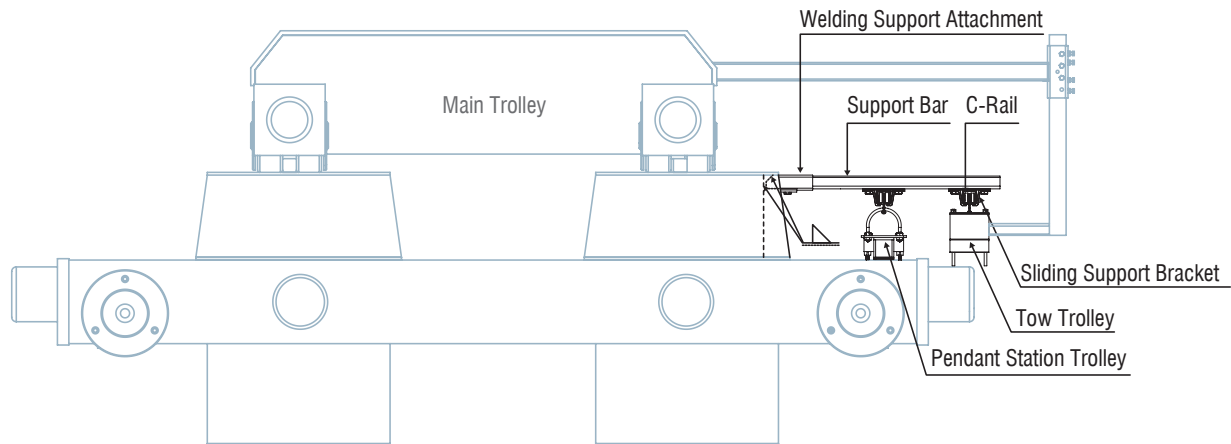


Product Code	Material
VS1008BS2	Steel (galvanised)

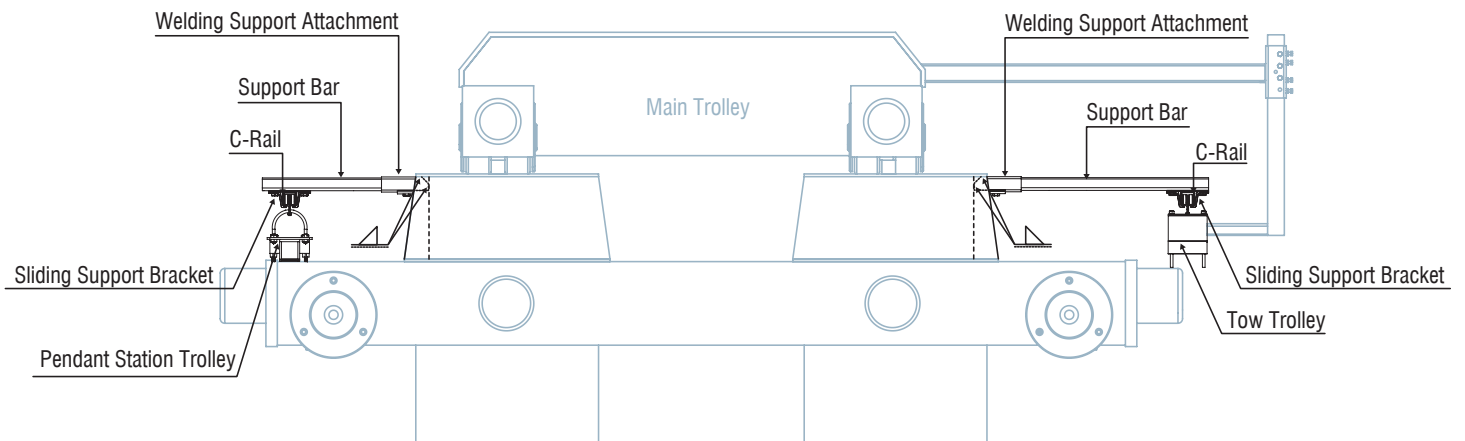


**See application examples for towing arrangement on page 24*

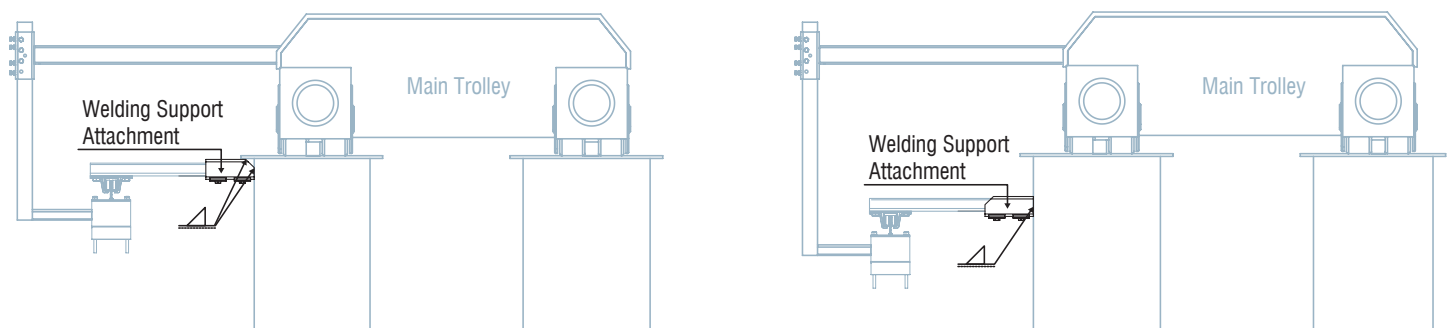
Application Example for One Side Support Bar Arrangement (double girder)



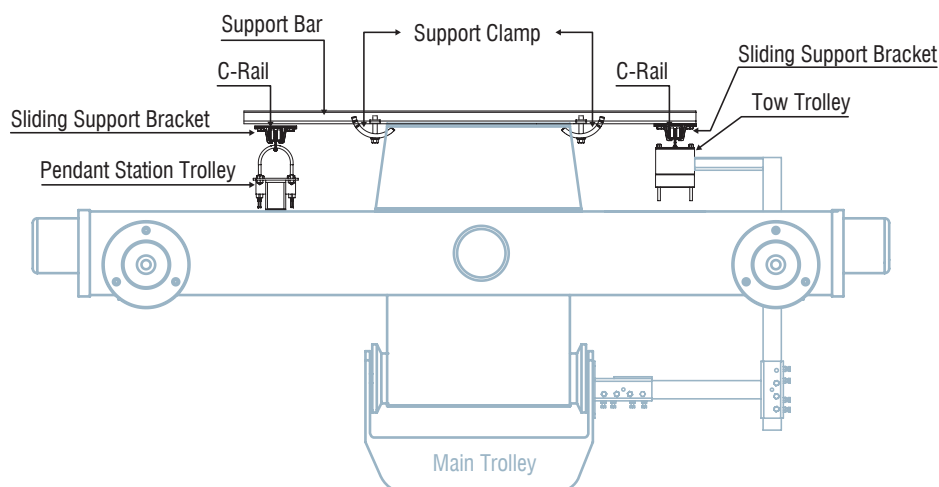
Application Example for Two Side Support Bar Arrangement (double girder)



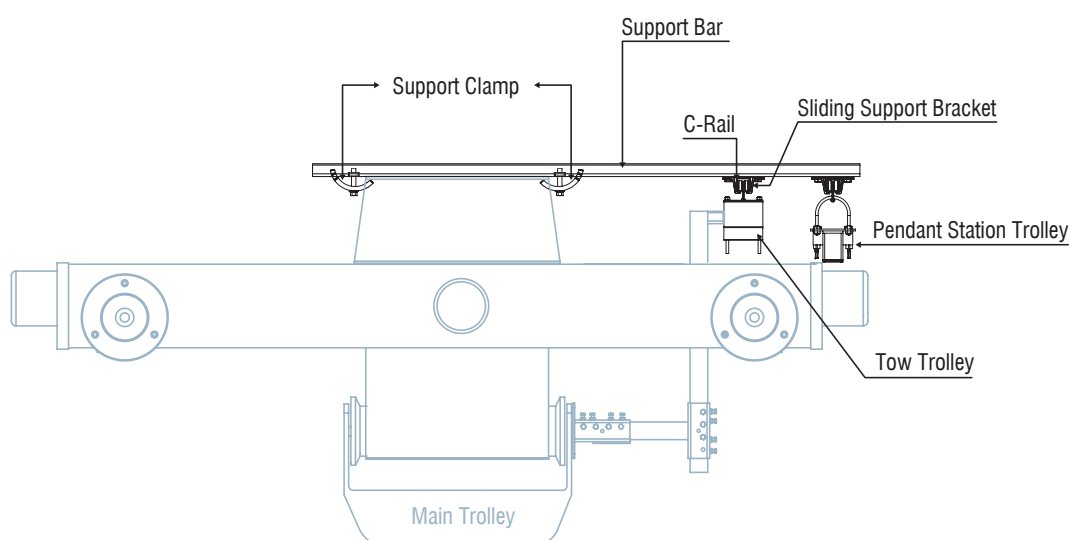
Application Types for Welding Support Attachment



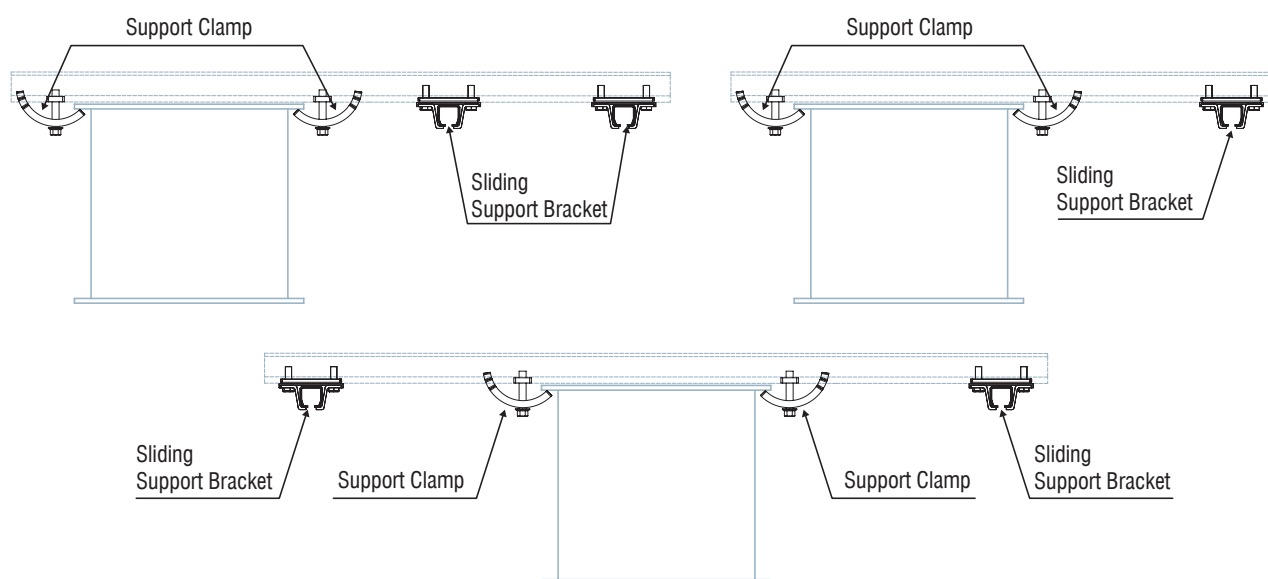
Application Example for Two Side Support Bar Arrangement (monorail system)



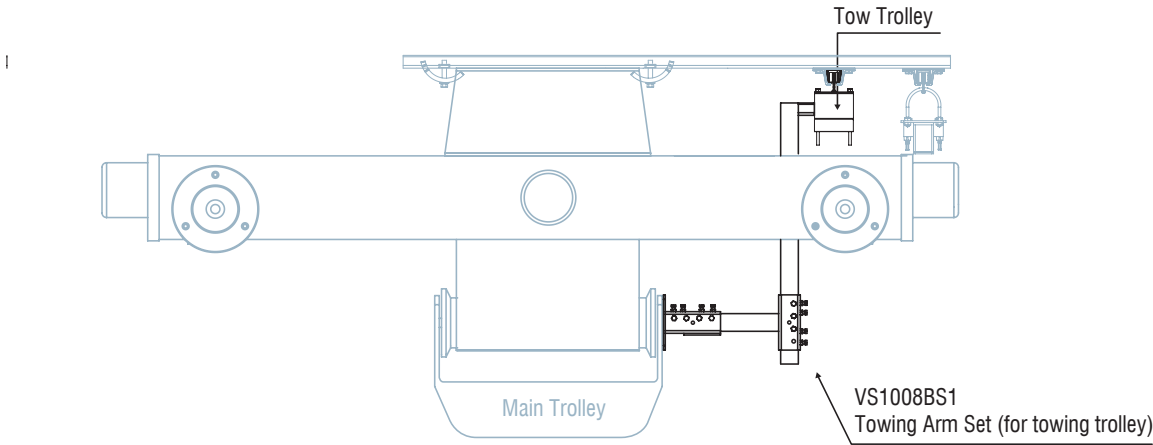
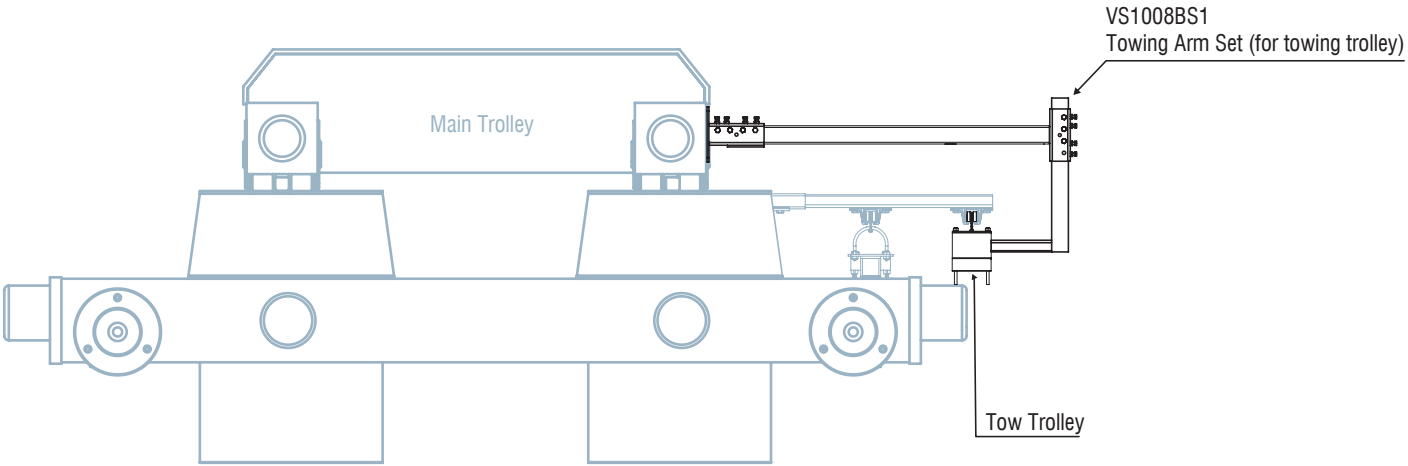
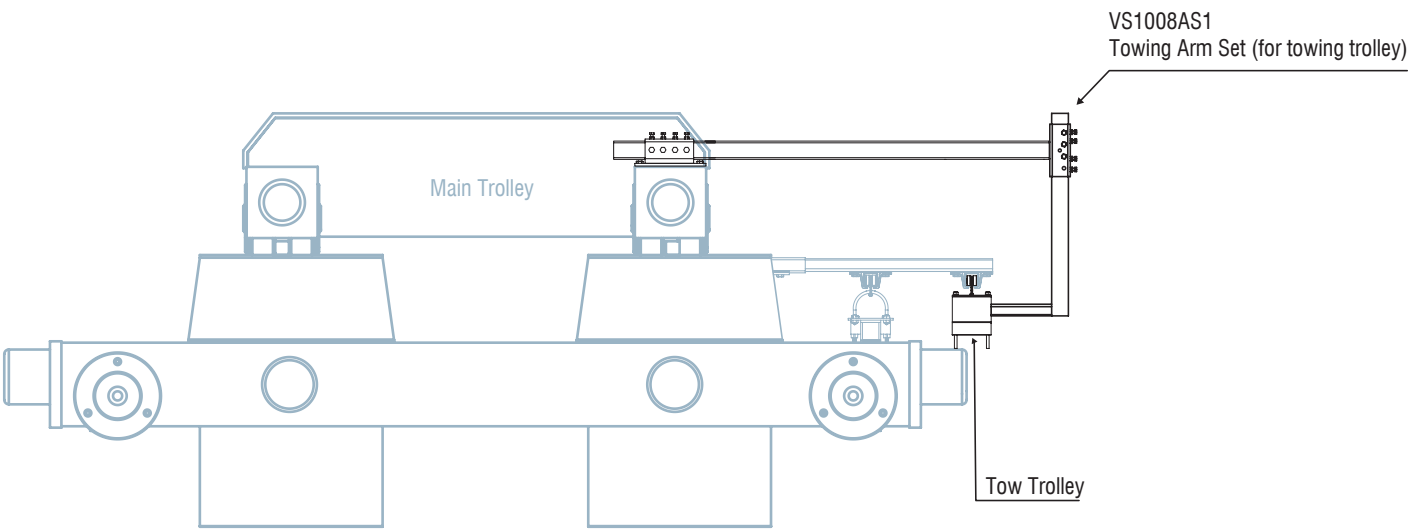
Application Example for One Side Support Bar Arrangement (monorail system)



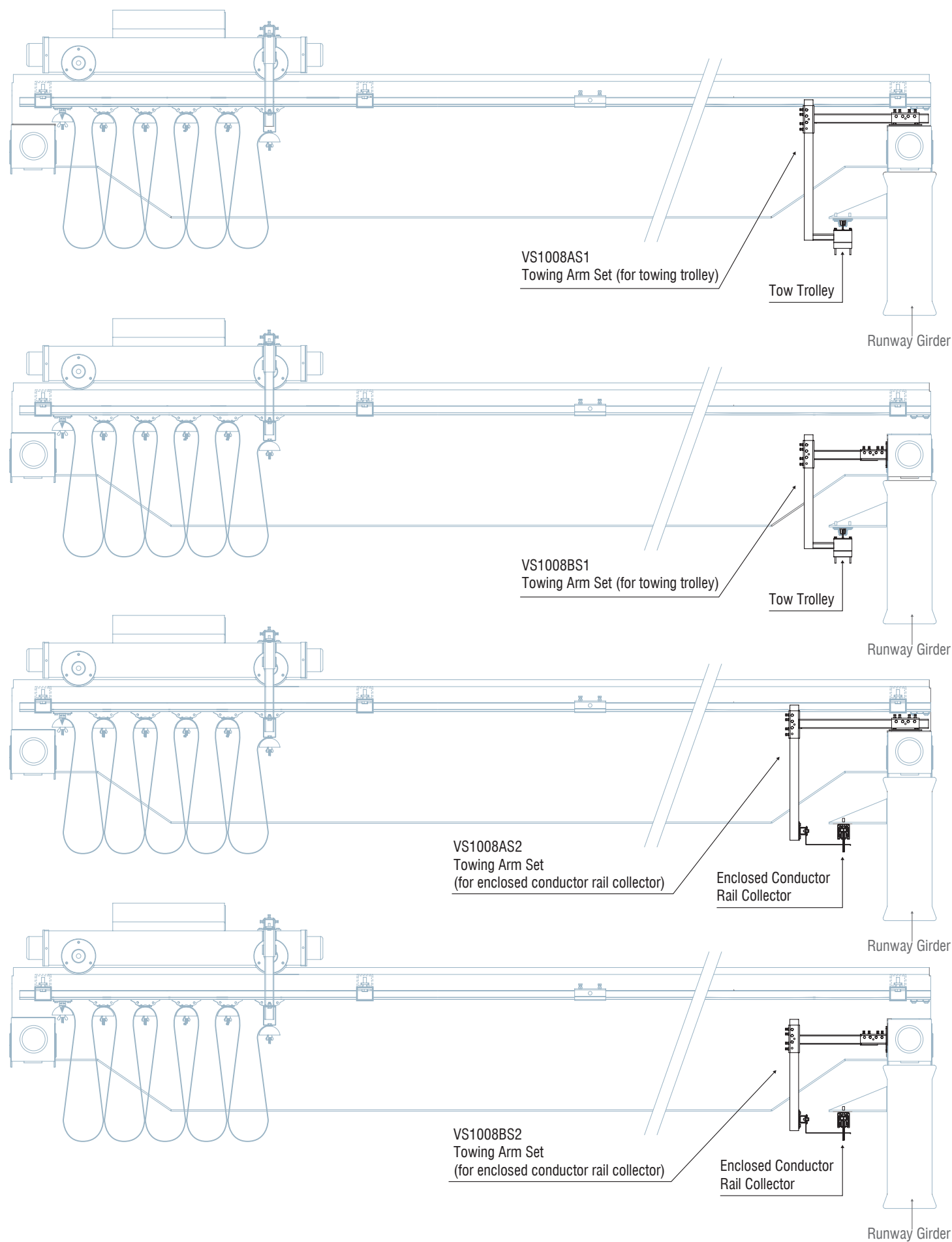
Application Types for Support Clamp



Towing Arrangement Application Examples for Main Trolley/Hoist



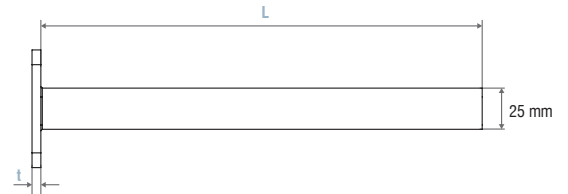
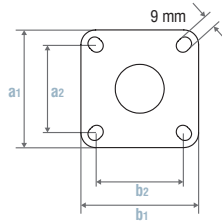
Towing Arrangement Application Examples for Runway Girder



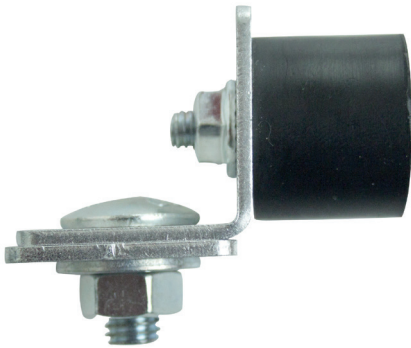
Towing Arm VS1007S/...



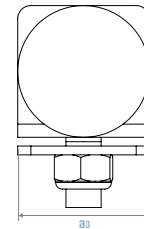
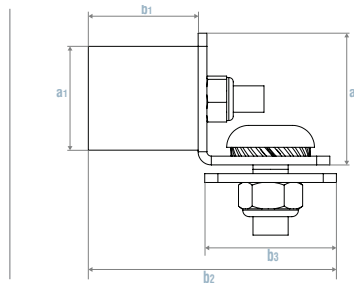
Product Code	Material	Dimensions (mm)				
		a ₁	a ₂	b ₁	b ₂	t
VS1007S/...	Steel (Galvanised)	63	40	63	40	4



End Stop Steel with rubber buffer VS1040L4



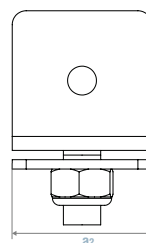
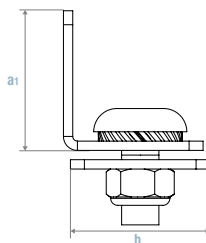
Product Code	Material	Weight (kg)	Dimensions (mm)					
			a ₁	a ₂	a ₃	b ₁	b ₂	b ₃
VS1040L4	Steel (galvanised)	0,09	25	32	30	20	52	30



End Stop Steel VS1040L5



Product Code	Material	Weight (kg)	Dimensions (mm)		
			a ₁	a ₂	b
VS1040L5	Steel (galvanised)	0,06	32	30	30



■ **Steel Trolley with Plastic saddle for Flatform Cables**
VS1040T3-86/4



Product Code
VS1040T3-86/4

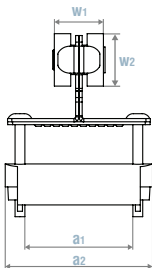
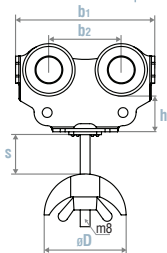
Wheel
Material

Steel roller
Carrier body steel
Support saddle polyamid
Hardware galvanized
Temperature resistance -30°C to +70°C

Max. Cable Load 20 kg per carrier

Dimensions (mm)

a ₁	64	h	22
a ₂	90	w ₁	31
b ₁	85	w ₂	32
b ₂	44	øD	50
s	17		
Weight (kg)			0,40



■ **Steel Trolley for Flatform Cables**
VS1040T5-86/4



Product Code
VS1040T5-86/4

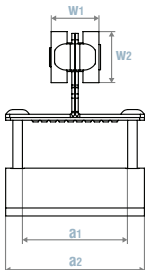
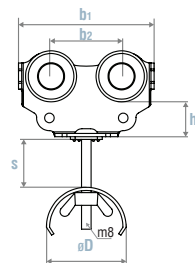
Wheel
Material

Steel roller
Carrier body steel
Support saddle steel
Hardware galvanized
Temperature resistance -30°C to +70°C

Max. Cable Load 25 kg per carrier

Dimensions (mm)

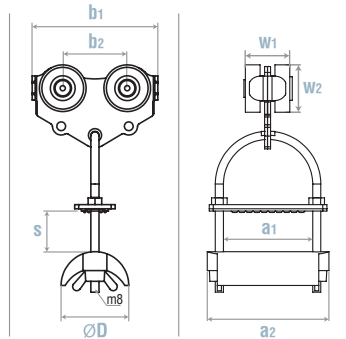
a ₁	64	h	22
a ₂	87	w ₁	31
b ₁	85	w ₂	32
b ₂	44	øD	50
s	17		
Weight (kg)			0,50



Steel Trolley with Plastic saddle for Flatform Cables (u-bolt)



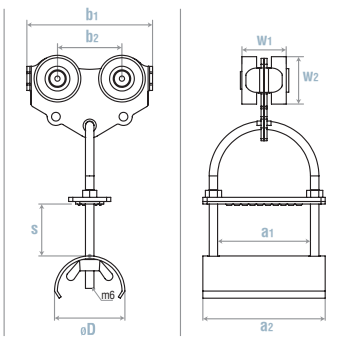
Product Code	Wheel Material	Steel roller	Dimensions (mm)	
VS1040T3-86/4-S		Carrier body steel	a ₁	64
		Support saddle polyamid	a ₂	90
		Hardware galvanized	b ₁	85
		Temperature resistance -30°C to +70°C	b ₂	44
			ØD	50
			s	17
			Weight (kg)	
			0,47	



Steel Trolley for Flatform Cables (u-bolt) VS1040T5-86/4-S



Product Code	Wheel Material	Steel roller	Dimensions (mm)	
VS1040T5-86/4-S		Carrier body steel	a ₁	64
		Support saddle steel	a ₂	90
		Hardware galvanized	b ₁	85
		Temperature resistance -30°C to +70°C	b ₂	44
			ØD	50
			s	17
			Weight (kg)	
			0,55	



■ **Steel Trolley with Plastic saddle for Flatrom Cables**
VS1040T3-105/4



Product Code
VS1040T3-105/4

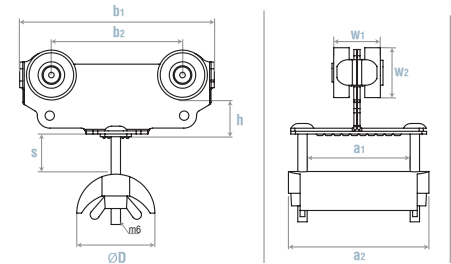
Wheel
Material

Max. Cable Load

Steel roller
Carrier body steel
Support saddle polyamid
Hardware galvanized
Temperature resistance -30°C to +70°C
20 kg per carrier

Dimensions (mm)

a ₁	64	h	22
a ₂	90	w ₁	31
b ₁	125	w ₂	32
b ₂	84	øD	50
s	37		
Weight (kg)			0,48



■ **Steel Trolley for Flatrom Cables**
VS1040T5-105/6



Product Code
VS1040T5-105/4

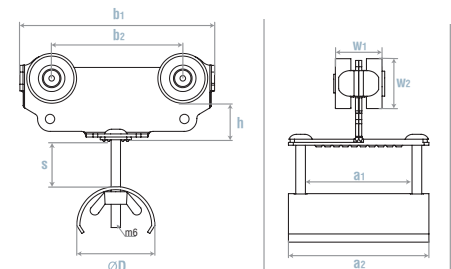
Wheel
Material

Max. Cable Load

Steel roller
Carrier body steel
Support saddle steel
Hardware galvanized
Temperature resistance -30°C to +70°C
25 kg per carrier

Dimensions (mm)

a ₁	64	h	22
a ₂	87	w ₁	31
b ₁	125	w ₂	32
b ₂	84	øD	50
s	37		
Weight (kg)			0,55



■ **Steel Trolley for Flatrom Cables**
VS1040T5-105/6



Product Code
VS1040T5-105/6

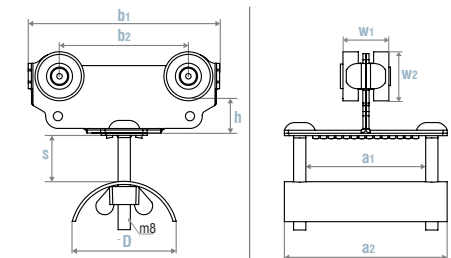
Wheel
Material

Max. Cable Load

Steel roller
Carrier body steel
Support saddle steel
Hardware galvanized
Temperature resistance -30°C to +70°C
25 kg per carrier

Dimensions (mm)

a ₁	74	h	22
a ₂	106	w ₁	31
b ₁	125	w ₂	32
b ₂	84	øD	80
s	22		
Weight (kg)			0,75

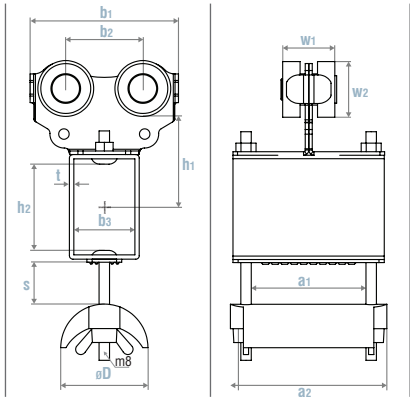


Towing Trolley with Plastic saddle for Flatfom cables
VS1040P3-86/4



Product Code	Wheel	Material
VS1040P3-86/4	Steel roller	Carrier body steel Support saddle Polyamid Hardware galvanized Temperature resistance -30°C to +70°C
Max. Cable Load		20 kg per carrier

Weight (kg)	Dimensions (mm)													
	a ₁	a ₂	b ₁	b ₂	b ₃	h ₁	h ₂	w ₁	w ₂	t	s	ØD		
0,71	64	90	85	44	35	52	48	31	32	2,5	17	50		

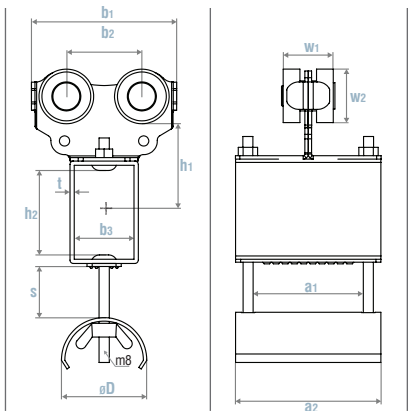


Towing Trolley for Flatfom Cables
VS1040P5-86/4



Product Code	Wheel	Material
VS1040P5-86/4	Steel roller	Carrier body steel Support saddle steel Hardware galvanized Temperature resistance -30°C to +70°C
Max. Cable Load		25 kg per carrier

Weight (kg)	Dimensions (mm)													
	a ₁	a ₂	b ₁	b ₂	b ₃	h ₁	h ₂	w ₁	w ₂	t	s	ØD		
0,81	64	87	85	44	35	52	48	31	32	2,5	17	50		

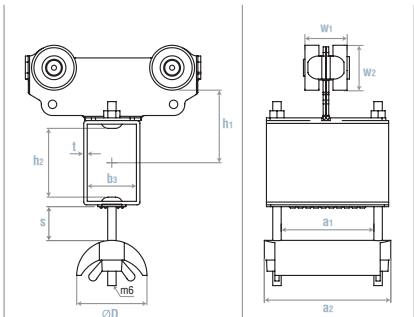


Towing Trolley with Plastic saddle for Flatform Cables
VS1040P3-105/4



Product Code	Wheel	Steel roller
VS1040P3-105/4	Material	Carrier body steel Support saddle polyamid Hardware galvanized Temperature resistance -30°C to +70°C
	Max. Cable Load	20 kg per carrier

Weight (kg)	Dimensions (mm)												
	a ₁	a ₂	b ₁	b ₂	b ₃	h ₁	h ₂	w ₁	w ₂	s	øD	t	
0,78	64	90	125	84	35	51	48	31	32	37	50	2,5	

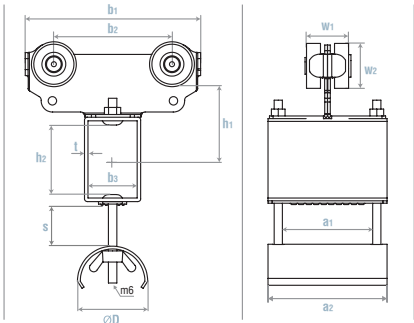


Towing Trolley for Flatform Cables
VS1040P5-105/4



Product Code	Wheel	Steel roller
VS1040P5-105/4	Material	Carrier body steel Support saddle steel Hardware galvanized Temperature resistance -30°C to +70°C
	Max. Cable Load	25 kg per carrier

Weight (kg)	Dimensions (mm)												
	a ₁	a ₂	b ₁	b ₂	b ₃	h ₁	h ₂	w ₁	w ₂	s	øD	t	
0,85	64	87	125	84	35	51	48	31	32	37	50	2,5	

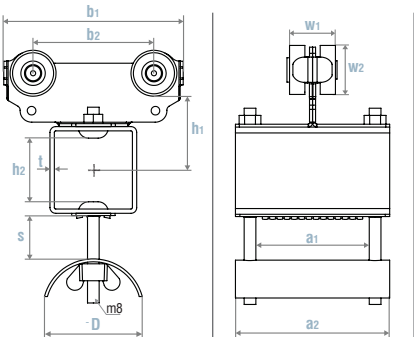


Towing Trolley for Flatform Cables
VS1040P5-105/6



Product Code	Wheel	Steel roller
VS1040P5-105/6	Material	Carrier body steel Support saddle steel Hardware galvanized Temperature resistance -30°C to +70°C
	Max. Cable Load	25 kg per carrier

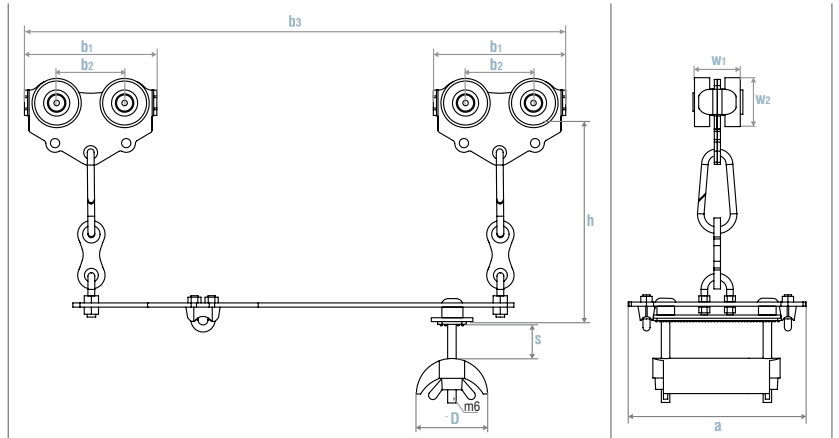
Weight (kg)	Dimensions (mm)												
	a ₁	a ₂	b ₁	b ₂	b ₃	h ₁	h ₂	w ₁	w ₂	s	øD	t	
1,22	74	106	125	84	55	51	40	31	32	22	80	2,5	



Pendant Station Trolley with plastic saddle for Flatform Cables VS1040F3-86/4



Product Code	Wheel	Steel roller	Dimensions (mm)	
VS1040F3-86/4	Material	Carrier body steel Support saddle polyamid Hardware galvanized Temperature resistance -30°C to +70°C	a	114 h 90
	Max. Cable Load	20 kg per carrier	b ₁	85 w ₁ 31
			b ₂	44 w ₂ 32
			b ₃	412 øD 50
			s	17
			Weight (kg)	1,55



• This products is generally used together with the mounting of 16 and 24 way plug and sockets. This facilitates fast and easy mounting.

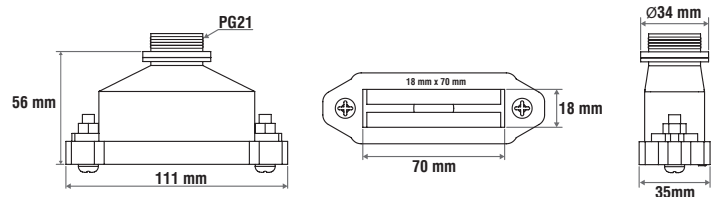
• This also saves time and reduces the service expenditure with minimum interference to the system when it is needed in some conditions; such as repairment, failure and service.

• Socket which is mounted to the product is placed in this photograph to illustrate the application, not sold with product.

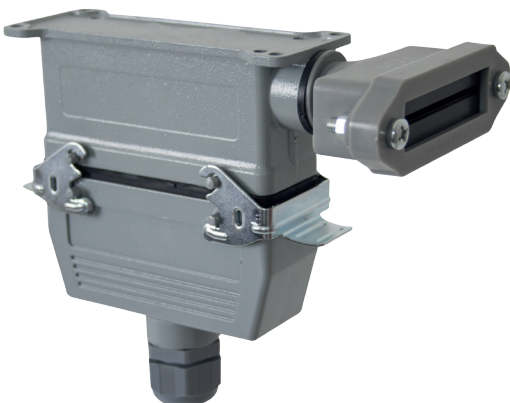
Cable Gland for Flatform Cable PG21(18mmx70mm) VS1040F-FG21/18x70



Product Code	Material	Polyamid
VS1040F-FG21/18x70	Cable Clamping Capacity	18 mm x 70 mm



Plug and Socket Sets VS1040F-S16FR / VS1040F-S24FR



Product Code	Product Name
VS1040F-S16FR	Plug and Socket Set (FR)(16 way)
VS1040F-S24FR	Plug and Socket Set (FR)(24 way)

Pendant Station Trolley for Flatpam Cables
VS1040F5-86/4

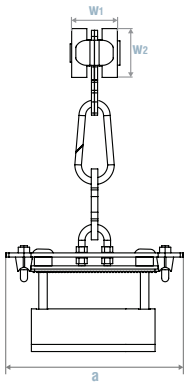
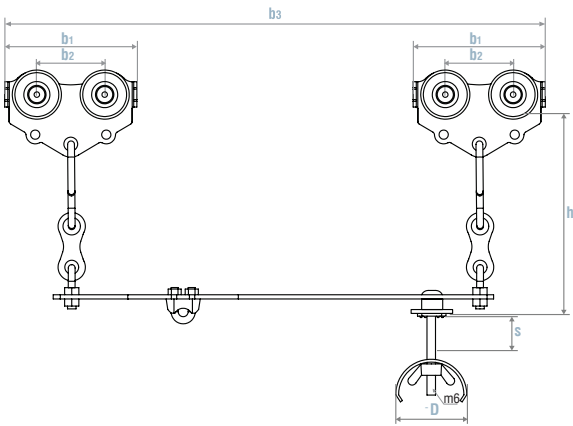


Product Code
VS1040F5-86/4

Wheel
Material

Steel roller
Carrier body steel
Support saddle steel
Hardware galvanized
Temperature resistance -30°C to +70°C
Max. Cable Load 25 kg per carrier

Dimensions (mm)			
a	114	h	90
b ₁	85	w ₁	31
b ₂	44	w ₂	32
b ₃	412	øD	50
s	17		
Weight (kg)		1,64	



- This product is generally used together with the mounting of 16 and 24 way plug and sockets. This facilitates fast and easy mounting.
- This also saves time and reduces the service expenditure with minimum interference to the system when it is needed in some conditions; such as repairment, failure and service.
- Socket which is mounted to the product is placed in this photograph to illustrate the application, not sold with product.

Pendant Station Trolley for Flatpam Cables
VS1040F5-105/6



Product Code

VS1040F5-105/6

Wheel

Steel roller

Material

Carrier body steel
Support saddle steel
Hardware galvanized
Temperature resistance -30°C to +70°C

Max. Cable Load

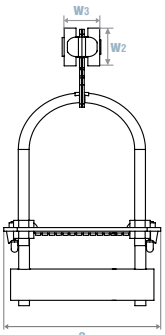
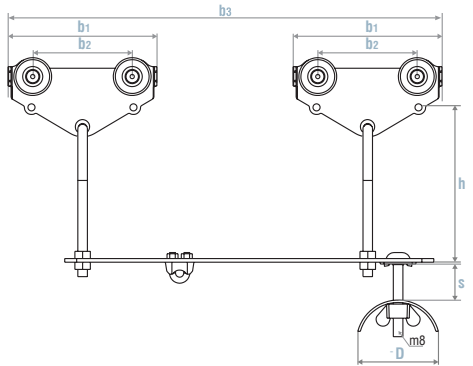
25 kg per carrier

Weight (kg)

2,2

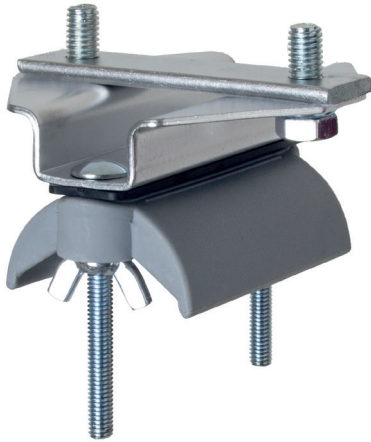
Dimensions (mm)

a	b ₁	b ₂	b ₃	h	w ₁	w ₂	s	øD
116	125	84	365	143	31	32	22	80



- This product is generally used together with the mounting of 16 and 24 way plug and sockets. This facilitates fast and easy mounting.
- This also saves time and reduces the service expenditure with minimum interference to the system when it is needed in some conditions; such as repairment, failure and service.
- Socket which is mounted to the product is placed in this photograph to illustrate the application, not sold with product.

Start Clamp with plastic saddle for Flatform Cables VS1040H3-86/4



Product Code
VS1040H3-86/4

Material

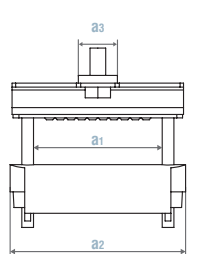
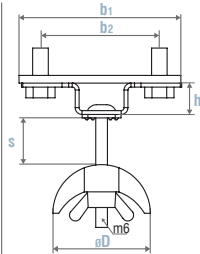
Steel body
Support saddle polyamid
Hardware galvanized
Temperature resistance -30°C to +70°C

Max. Cable Load

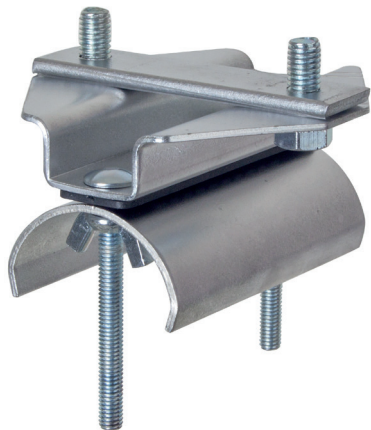
20 kg per carrier

Dimensions (mm)

a ₁	64	b ₁	83
a ₂	90	b ₂	61
a ₃	30	h	13
s	17	øD	50
Weight (kg)		0,27	



Start Clamp (steel) for Flatform Cables VS1040H5-86/4



Product Code
VS1040H5-86/4

Material

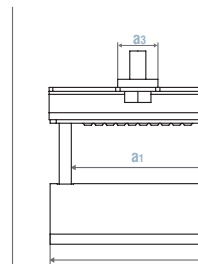
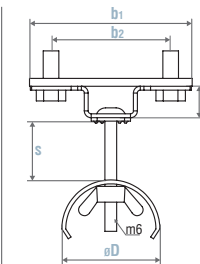
Steel body
Support saddle steel
Hardware galvanized
Temperature resistance -30°C to +70°C

Max. Cable Load

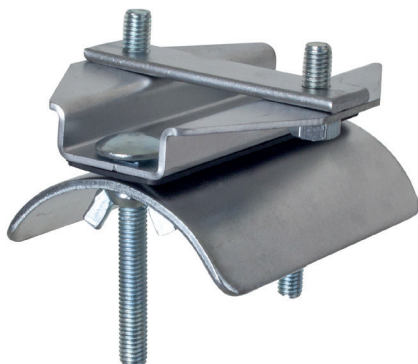
25 kg per carrier

Dimensions (mm)

a ₁	64	b ₁	83
a ₂	87	b ₂	61
a ₃	30	h	13
s	17	øD	50
Weight (kg)		0,37	



Start Clamp (steel) for Flatform Cables VS1040H5-105/6



Product Code
VS1040H5-105/6

Material

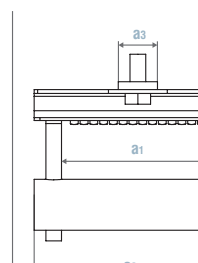
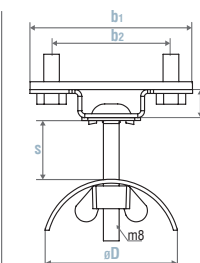
Steel body
Support saddle steel
Hardware galvanized
Temperature resistance -30°C to +70°C

Max. Cable Load

25 kg per carrier

Dimensions (mm)

a ₁	74	b ₁	83
a ₂	106	b ₂	61
a ₃	30	h	13
s	22	øD	80
Weight (kg)		0,54	



■ **Steel Trolley (ball joint)**
VS1040T7



Product Code
VS1040T7

Wheel
Material

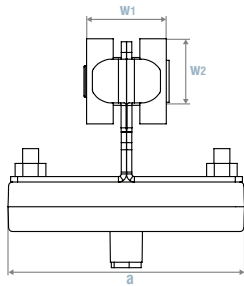
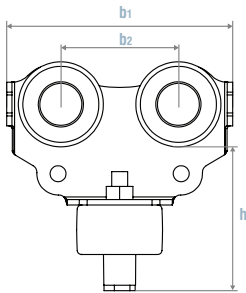
Steel roller
Carrier body steel
Ball joint polyamid
Hardware galvanized
Temperature resistance -30°C to +70°C

Max. Cable Load

20 kg per carrier

Dimensions (mm)

a	87	w ₁	31
b ₁	85	w ₂	32
b ₂	44		
h	53		
Weight (kg)			0,42



■ **Steel Trolley (U-bolt)**
VS1040T9



Product Code
VS1040T9

Wheel
Material

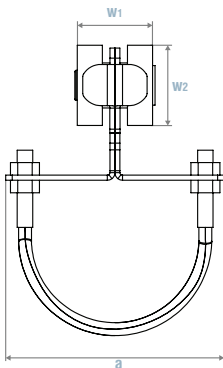
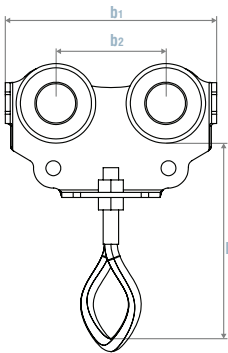
Steel roller
Carrier body steel
Hardware galvanized
Temperature resistance -30°C to +70°C

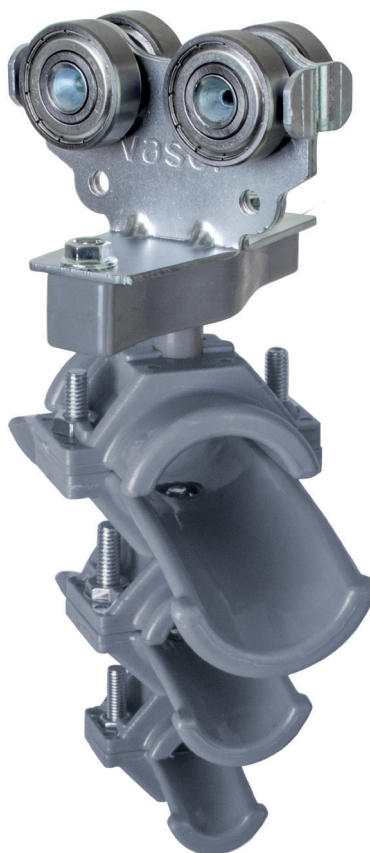
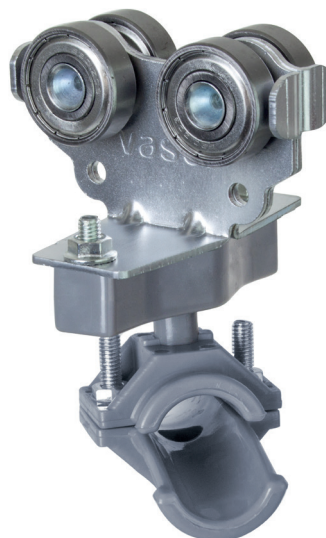
Max. Cable Load

32 kg per carrier

Dimensions (mm)

a	87	w ₁	31
b ₁	85	w ₂	32
b ₂	44		
h	79		
Weight (kg)			0,40





Usually festoon systems need various quantity of cables to feed the system (to supply main hoist, control application, movement operations, and control of safeguard systems), u-bolt support saddle systems provides great flexibility, (especially for roundform cables)

By the fastening one saddle to another one it is available to be use up to 4 different cable in the same system According to the trolley's carrying capacity limits

Tow Trolley (ball joint)
VS1040P7



Product Code
VS1040P7

Wheel
Material

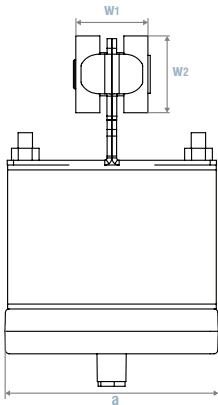
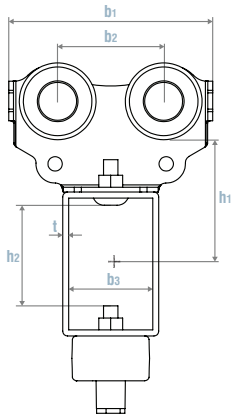
Steel roller
Carrier body steel
Ball joint polyamid
Hardware galvanized
Temperature resistance -30°C to +70°C

Max. Cable Load

20 kg per carrier

Dimensions (mm)

a	87	h ₁	52
b ₁	85	h ₂	48
b ₂	44	w ₁	31
b ₃	35	w ₂	32
t	2,5		
Weight (kg)			0,73



Towing Trolley (U-bolt)
VS1040P9



Product Code
VS1040P9

Wheel
Material

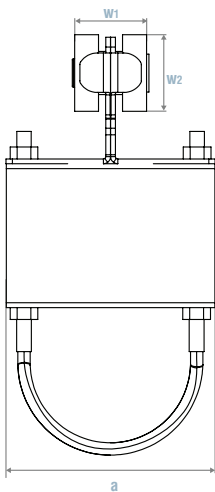
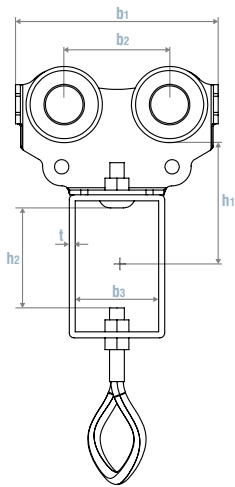
Steel roller
Carrier body steel
Hardware galvanized
Temperature resistance -30°C to +70°C

Max. Cable Load

32 kg per carrier

Dimensions (mm)

a	87	h ₁	52
b ₁	85	h ₂	48
b ₂	44	w ₁	31
b ₃	35	w ₂	32
t	2,5		
Weight (kg)			0,72

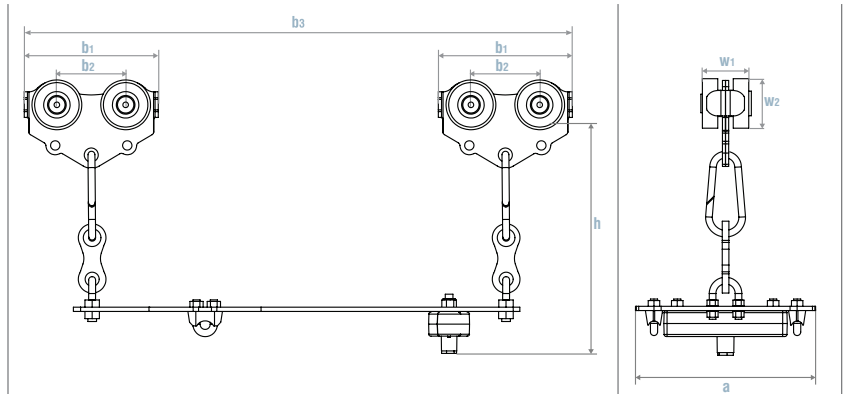


■ Pendant Station Trolley (ball joint) VS1040F7



- This products is generally used together with the mounting of 16 and 24 way plug and sockets. This facilitates fast and easy mounting.
- This also saves time and reduces the service expenditure with minumum interference to the system when it is needed in some conditions; such as repairment, failure and service.
- Socket which is mounted to the product is placed in this photograph to illustrate the application, not sold with product.

Product Code VS1040F7	Wheel	Steel roller	Dimensions (mm)			
	Material	Carrier body steel	a	114	h	90
		Ball joint polyamid	b ₁	85	w ₁	31
		Hardware galvanized	b ₂	44	w ₂	32
		Temperature resistance -30°C to +70°C	b ₃	412		
	Max. Cable Load	20 kg per carrier	Weight (kg) 1.45			

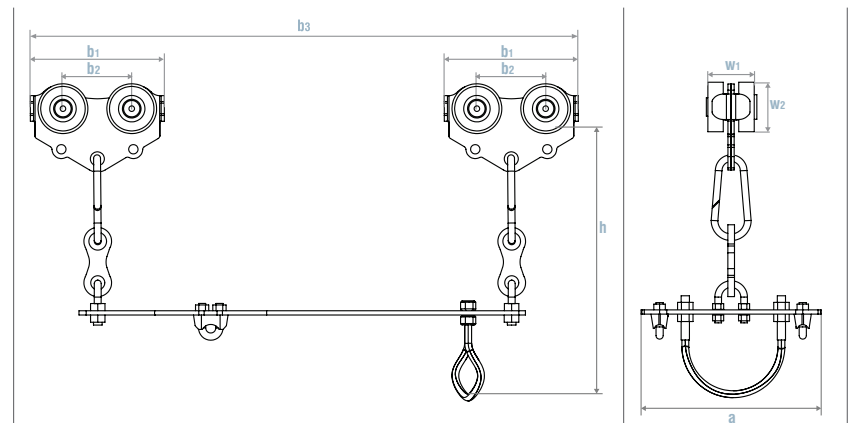


■ Pendant Station Trolley (U-bolt) VS1040F9

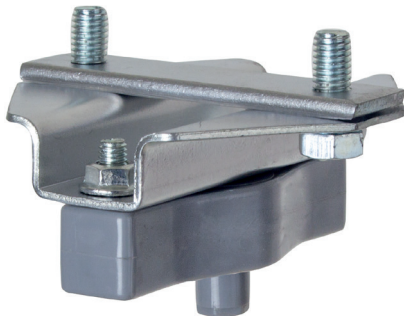


- This products is generally used together with the mounting of 16 and 24 way plug and sockets. This facilitates fast and easy mounting.
- This also saves time and reduces the service expenditure with minumum interference to the system when it is needed in some conditions; such as repairment, failure and service.
- Socket which is mounted to the product is placed in this photograph to illustrate the application, not sold with product.

Product Code	Wheel	Steel roller	Dimensions (mm)			
VS1040F9	Material	Carrier body steel	a	114	h	90
		Hardware galvanized	b ₁	85	w ₁	31
		Temperature resistance -30°C to +70°C	b ₂	44	w ₂	32
			b ₃	412		
	Max. Cable Load	32 kg per carrier	Weight (kg) 1,45			



■ **Start Clamp (ball joint)**
VS1040H7



Product Code
VS1040H7

Material

Steel body
Ball joint polyamid
Hardware galvanized
Temperature resistance -30°C to +70°C

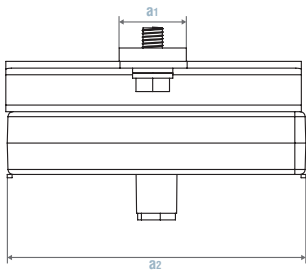
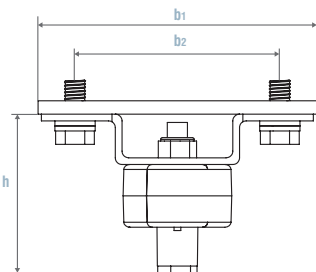
Max. Cable Load

20 kg per carrier

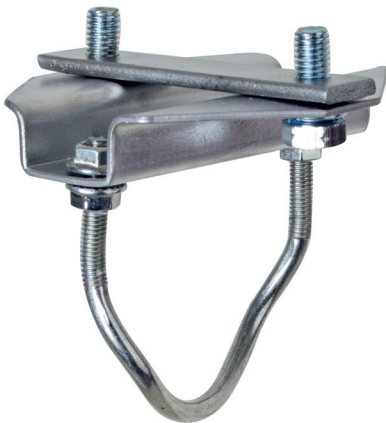
Dimensions (mm)

a₁ 30
a₂ 88
b₁ 83
b₂ 60
h 43

Weight (kg) 0,24



■ **Start Clamp (U-bolt)**
VS1040H9



Product Code
VS1040H9

Material

Steel body
Hardware galvanized
Temperature resistance -30°C to +70°C

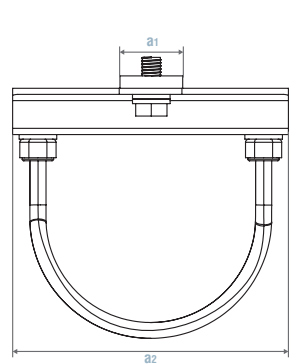
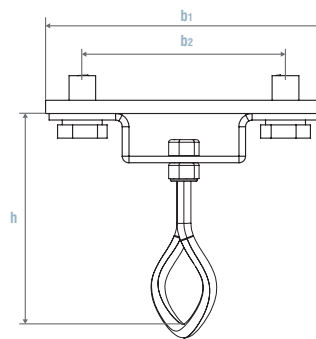
Max. Cable Load

32 kg per carrier

Dimensions (mm)

a₁ 30
a₂ 88
b₁ 83
b₂ 60
h 71

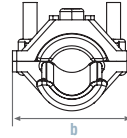
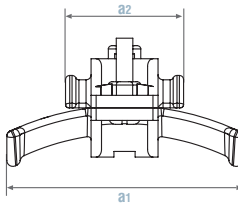
Weight (kg) 0,24



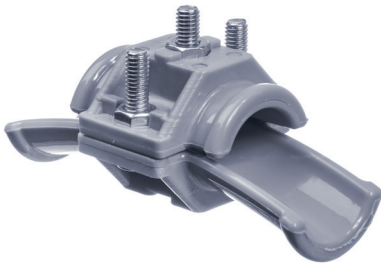
Support Saddle Type 10-16 VS1014M-16



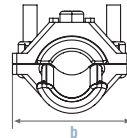
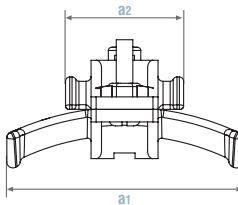
Product Code VS1014M-16	Material Polyamid	Dimensions (mm)
Cable Clamping Capacity 10 mm / 16 mm		a_1 70
		a_2 35
		b 42
		Weight (kg) 0,04



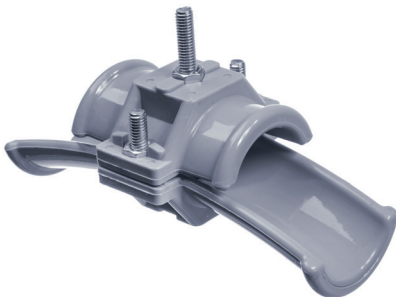
Support Saddle Type 17-25 VS1014M-25



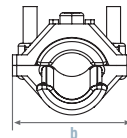
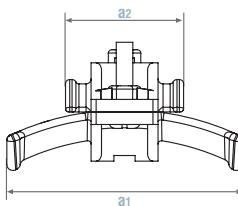
Product Code VS1014M-25	Material Polyamid	Dimensions (mm)
Cable Clamping Capacity 17 mm / 25 mm		a_1 98
		a_2 49
		b 50
		Weight (kg) 0,06



Support Saddle Type 26-36 VS1014M-36



Product Code VS1014M-36	Material Polyamid	Dimensions (mm)
Cable Clamping Capacity 26 mm / 36 mm		a_1 138
		a_2 69
		b 64
		Weight (kg) 0,11



■ **Support Saddle Type 10-16 (U-bolt)**
VS1014Z-16

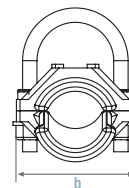
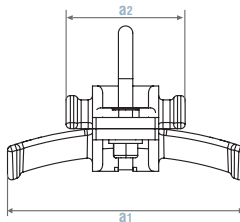


Product Code
VS1014Z-16

Material
Cable
Clamping Capacity

Polyamid
10 mm / 16 mm

Dimensions (mm)
a₁ 70
a₂ 35
b 42
Weight (kg) 0,04



■ **Support Saddle Type 17-25 (U-bolt)**
VS1014Z-25

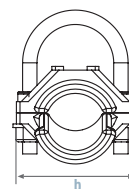
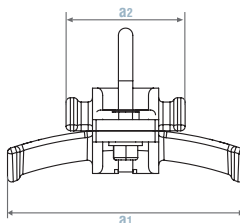


Product Code
VS1014Z-25

Material
Cable
Clamping Capacity

Polyamid
17 mm / 25 mm

Dimensions (mm)
a₁ 98
a₂ 49
b 50
Weight (kg) 0,07



■ **Support Saddle Type 26-36 (U-bolt)**
VS1014Z-36

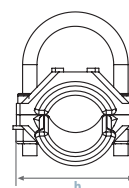
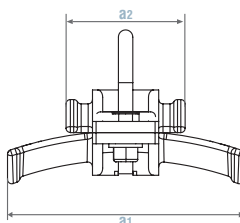


Product Code
VS1014Z-36

Material
Cable
Clamping Capacity

Polyamid
26 mm / 36 mm

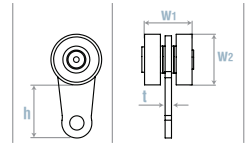
Dimensions (mm)
a₁ 138
a₂ 69
b 64
Weight (kg) 0,13



■ Suspension Trolley (2 Wheel) VS1040S2



Product Code	Wheel	Steel roller
VS1040S4-2	Material	Carrier body steel Hardware galvanized Temperature resistance -30°C to +70°C
	Max. Load	10 kg per carrier

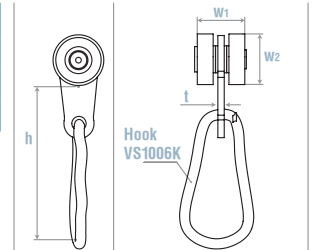


Weight (kg)	Dimensions (mm)			
	h	w ₁	w ₂	t
0,15	24	31	32	4

■ Suspension Trolley (2 Wheel) with hook VS1040S2-K



Product Code	Wheel	Steel roller
VS1040S4-2	Material	Carrier body steel Hardware galvanized Temperature resistance -30°C to +70°C



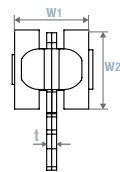
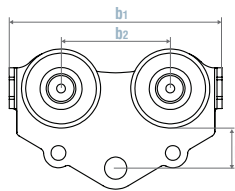
Weight (kg)	Dimensions (mm)			
	w ₁	w ₂	t	
0,17	31	32	4	

■ Suspension Trolley (4 Wheel) VS1040S4



Product Code	Wheel	Steel roller
VS1040S2-4	Material	Carrier body steel Hardware galvanized Temperature resistance -30°C to +70°C
	Max. Load	32 kg per carrier

Dimensions (mm)			
b ₁	85	w ₁	31
b ₂	44	w ₂	32
h	24	t	4
Weight (kg)		0,32	

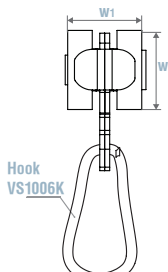
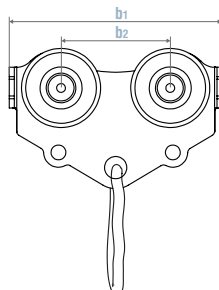


■ Suspension Trolley (4 Wheel) with hook VS1040S4-K



Product Code	Wheel	Steel roller
VS1040S5-4	Material	Carrier body steel Hardware galvanized Temperature resistance -30°C to +70°C

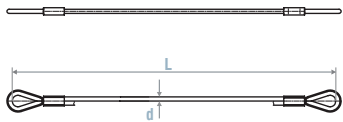
Dimensions (mm)			
b ₁	85	w ₁	31
b ₂	44	w ₂	32
Weight (kg)		0,35	



Tow Rope
VS1006R4/....



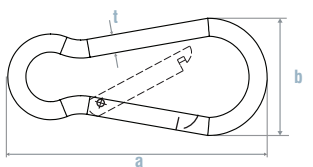
Product Code	Material	Dimensions (mm)
VS1006R4/....	Steel (PVC covered)	d 4



Hook
VS1006K4 / VS1006K6



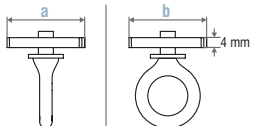
Product Code	Material	Weight (kg)	Dimensions (mm)		
VS1006K4	Steel (galvanised)	0,02	a	b	t
VS1006K6	Steel (galvanised)	0,03	40	12	4
			60	17	6



Rope Eye
VS1006E40



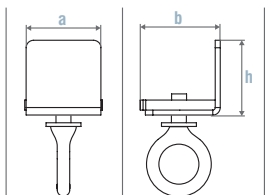
Product Code	Material	Weight (kg)	Dimensions (mm)	
VS1006E40 (for 1040 series)	Steel	0,10	a	b
			30	30



Rope Eye with End Stop
VS1006L40D



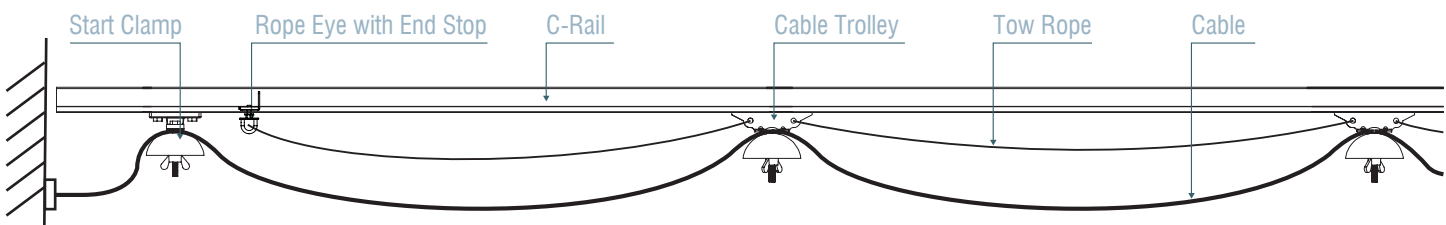
Product Code	Material	Weight (kg)	Dimensions (mm)		
VS1006L40D (for 1040 series)	Steel	0,12	a	b	h
			30	32	32



Rope Eye with End Stop (Ruber Buffer)
VS1006L40K



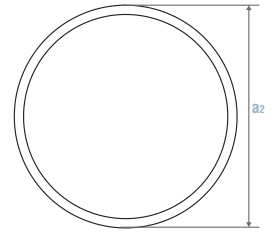
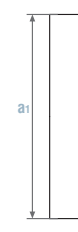
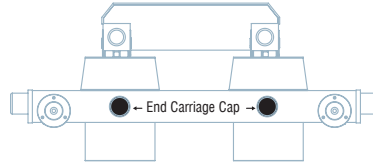
Product Code	Material	Weight (kg)	Dimensions (mm)		
VS1006L40K (for 1040 series)	Steel	0,14	a	b	h
			30	52	32



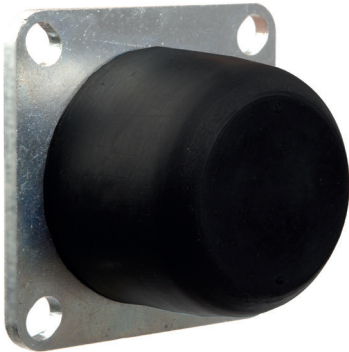
■ End Carriage Cap VS-1004Y-120 / VS-1004Y-150



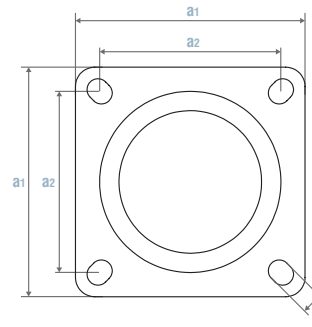
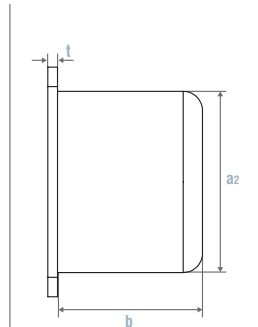
Product Code	Material	Weight (kg)	Dimensions (mm)	
			a ₁	a ₂
VS-1004Y-120	PE	0,04	120	130
VS-1004Y-150	PE	0,05	150	160



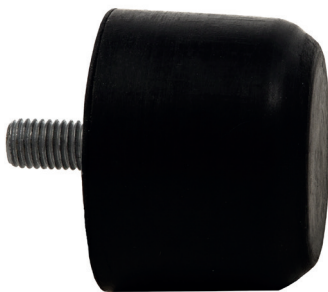
■ Rubber Buffers with Mounting Plate



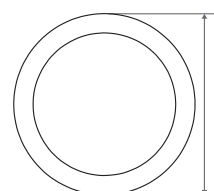
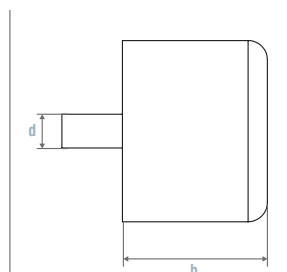
Product Code	Product	Dimensions (mm)				
		a ₁	a ₂	b	d	t
VS1005T-50x55	Rubber Buffers T50x55	65	50	55	7	3
VS1005T-75x60	Rubber Buffers T75x60	95	75	60	11	4
VS1005T-100x100	Rubber Buffers T100x100	125	100	100	15	6
VS1005T-150x150	Rubber Buffers T150x150	200	150	150	17	8
VS1005T-200x200	Rubber Buffers T200x200	250	200	200	21	10



■ Rubber Buffers with Mounting Bolt



Product Code	Product	Dimensions (mm)		
		a	b	d
VS1005C-20x20	Rubber Buffers C20x20	20	20	m6
VS1005C-25x20	Rubber Buffers C25x20	25	20	m6
VS1005C-30x30	Rubber Buffers C30x30	30	30	m6
VS1005C-50x55	Rubber Buffers C50x55	50	55	m8
VS1005C-75x60	Rubber Buffers C75x60	75	60	m12
VS1005C-100x100	Rubber Buffers C100x100	100	100	m14
VS1005C-150x150	Rubber Buffers C150x150	150	150	m16
VS1005C-200x200	Rubber Buffers C200x200	200	200	m20



vasel[®]
Electromechanic



VASEL ELEKTROMEKANİK METAL PLASTİK SAN. TİC. LTD. ŞTİ.

Büsan 4 OSB Fevzi Çakmak Mh. Milenyum Cd. 28/F

P.B.: 42100 - Karatay / KONYA / TÜRKİYE

Phone : +90 332 235 35 10

Fax : +90 332 235 35 68

E-mail : info@vasel.com.tr